

# Destiny Class 200 ton Yacht

### Statistics

Tonnage: 240 tons  
Jump: 2 parsecs  
Acceleration: 4G  
Power Plant: 4  
Fuel: 88 tons  
Cargo: 2 tons  
Ship's Vehicles:  
• 1 air/raft  
• 2 grav-bikes  
Armaments:  
• 2 double laser turrets

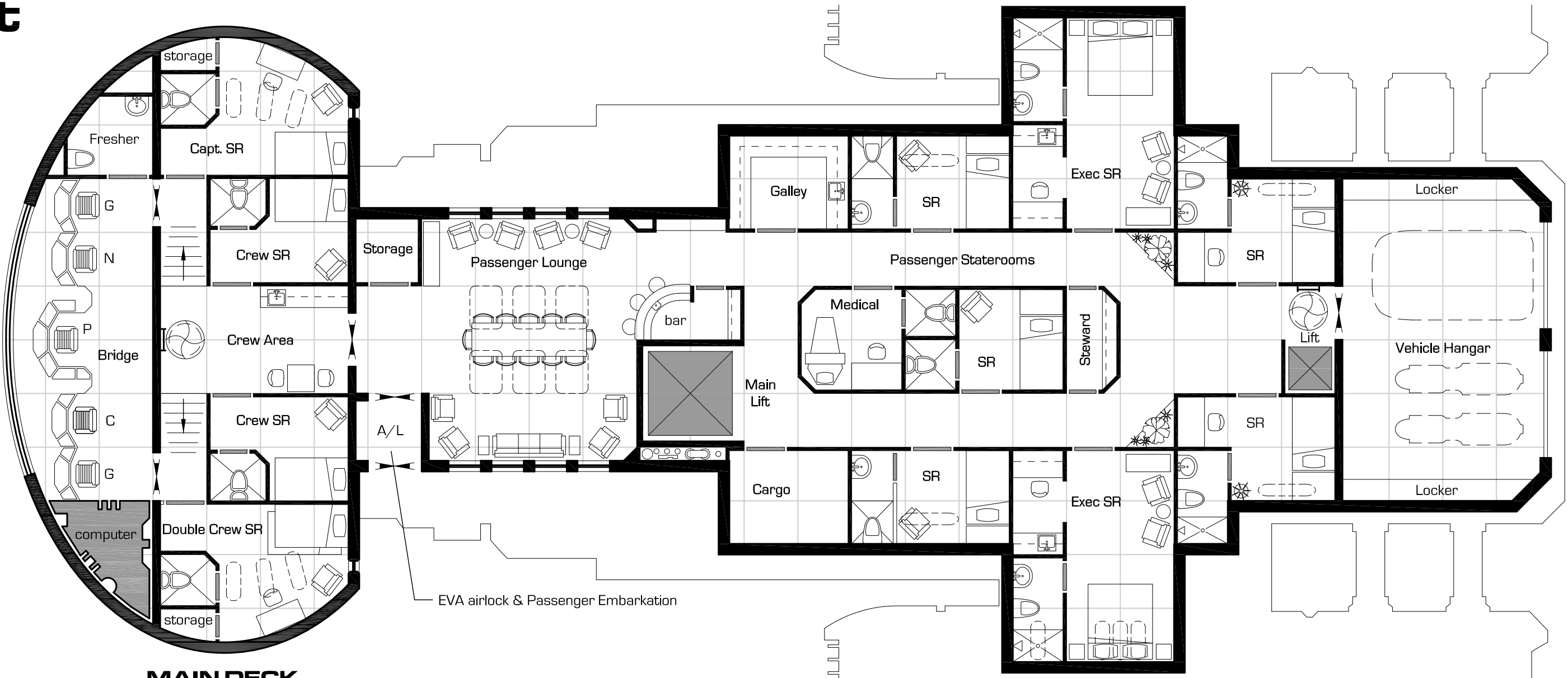
Crew: 5 (2 min.)  
• 1 pilot / navigator  
• 1 engineer  
• 1 steward/medic  
• 2 gunners  
Passengers: 9  
No low berths

### Deck Plan Symbols

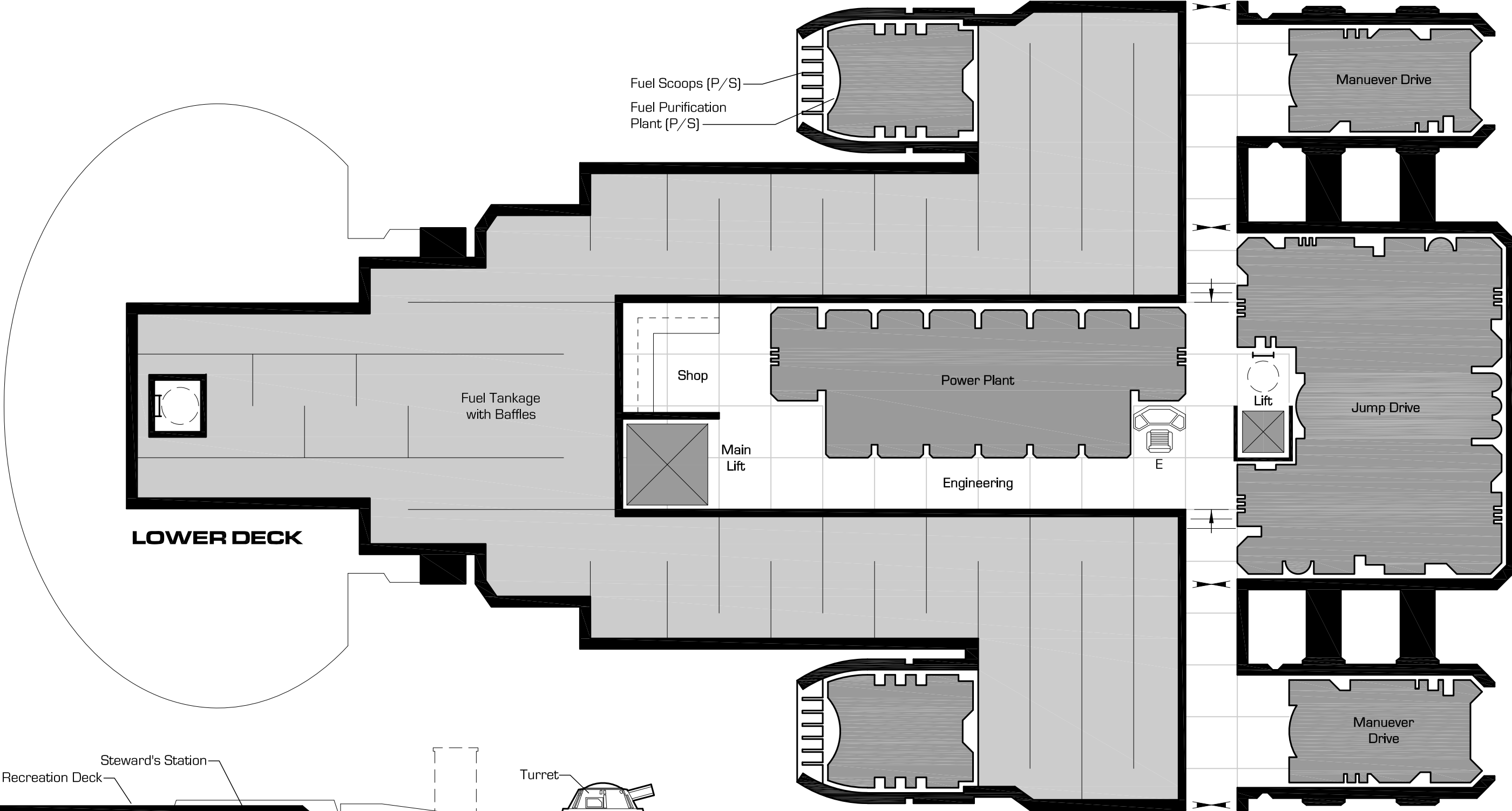
- Bulkhead
- Interior Wall
- Sliding Door
- Maintenance Hatch
- Iris Valve
- Iris Valve - floor
- Iris Valve - ceiling
- Iris Valve - both
- Stairs down
- 1.5m
- skylight
- decorative landscaping

### Ships of the Class

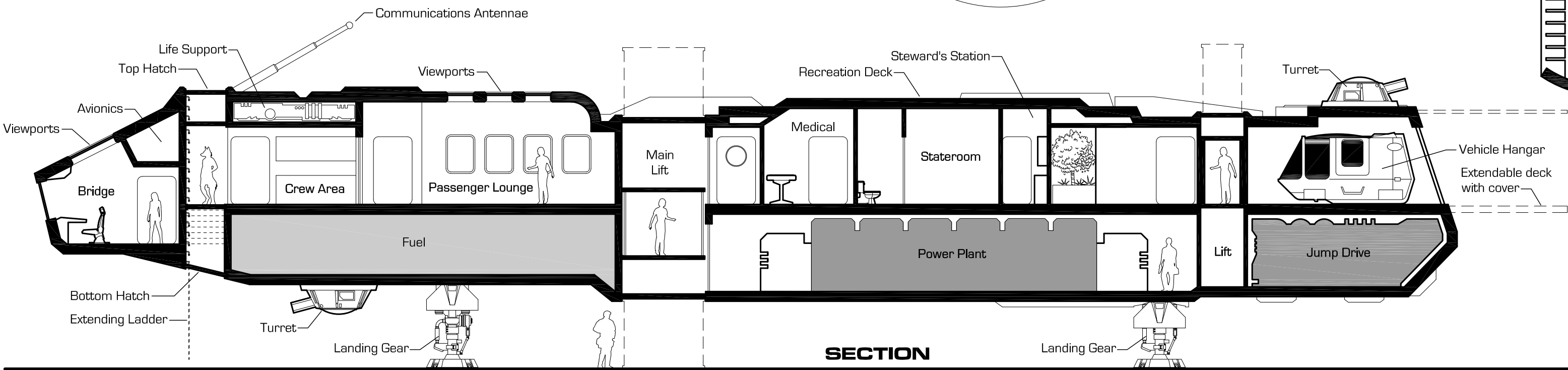
Avalon  
Fortuna  
Ethereal  
Night Wind  
Souldeep  
Skydancer  
Radiance  
Majestic  
Glory  
Festivale  
Wanderlust  
Harmony



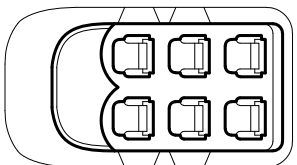
MAIN DECK



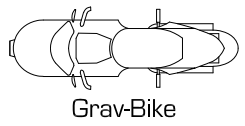
LOWER DECK



SECTION



Standard Air/Raft



Grav-Bike

# Hammer Class 100 ton Merchant

**Statistics**

Tonnage: 100 tons  
Jump: 2 parsecs  
Acceleration: 2G  
Power Plant: 2  
Fuel: 40 tons  
Cargo: 15 tons/21 tons without air/raft  
Ship's Vehicles:  

- optional air/raft

Armaments:  

- 1 double laser turret

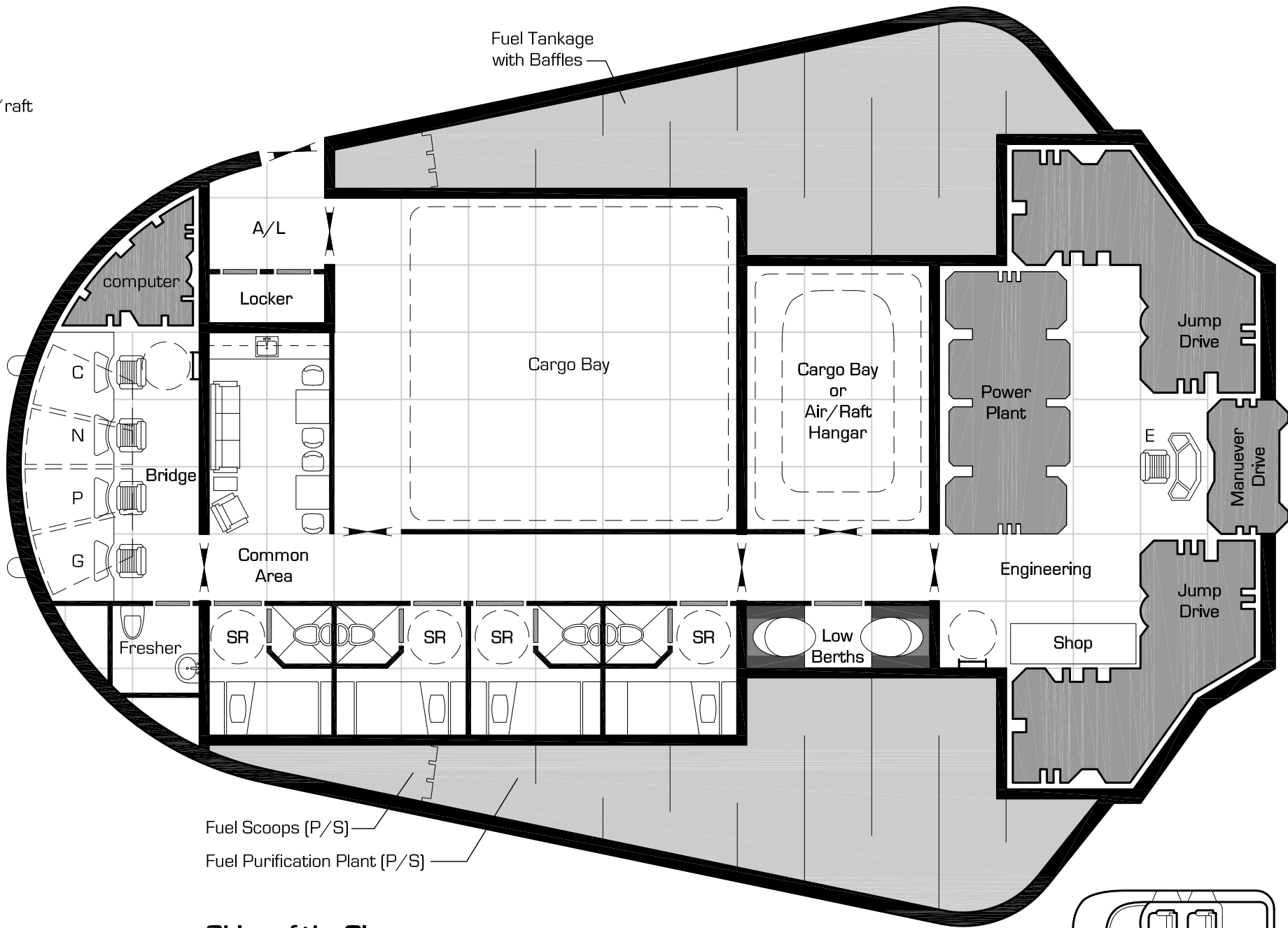
Crew: 3 (min. 1)  

- 1 pilot / navigator
- 1 engineer
- 1 gunner/ medic

Passengers: varies with crew size  
2 low berths

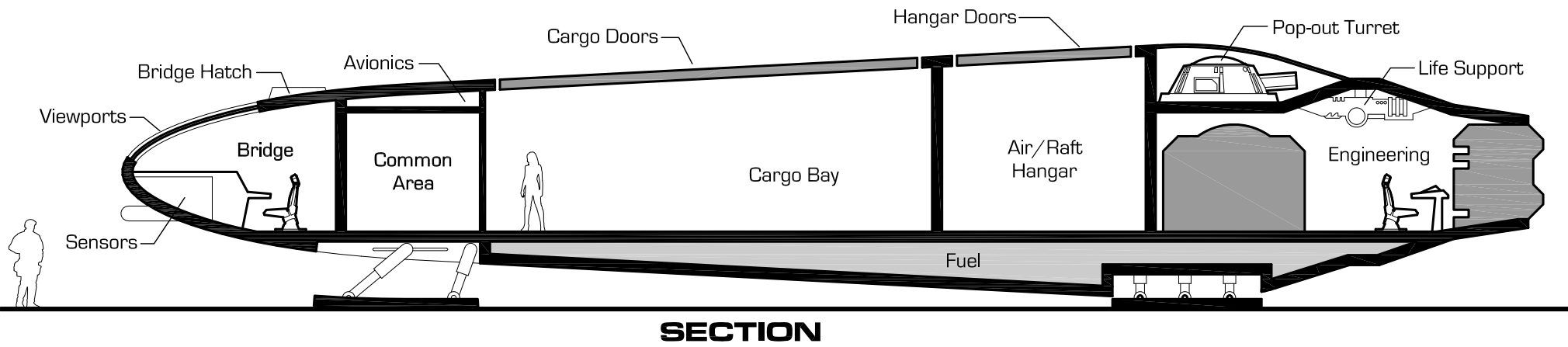
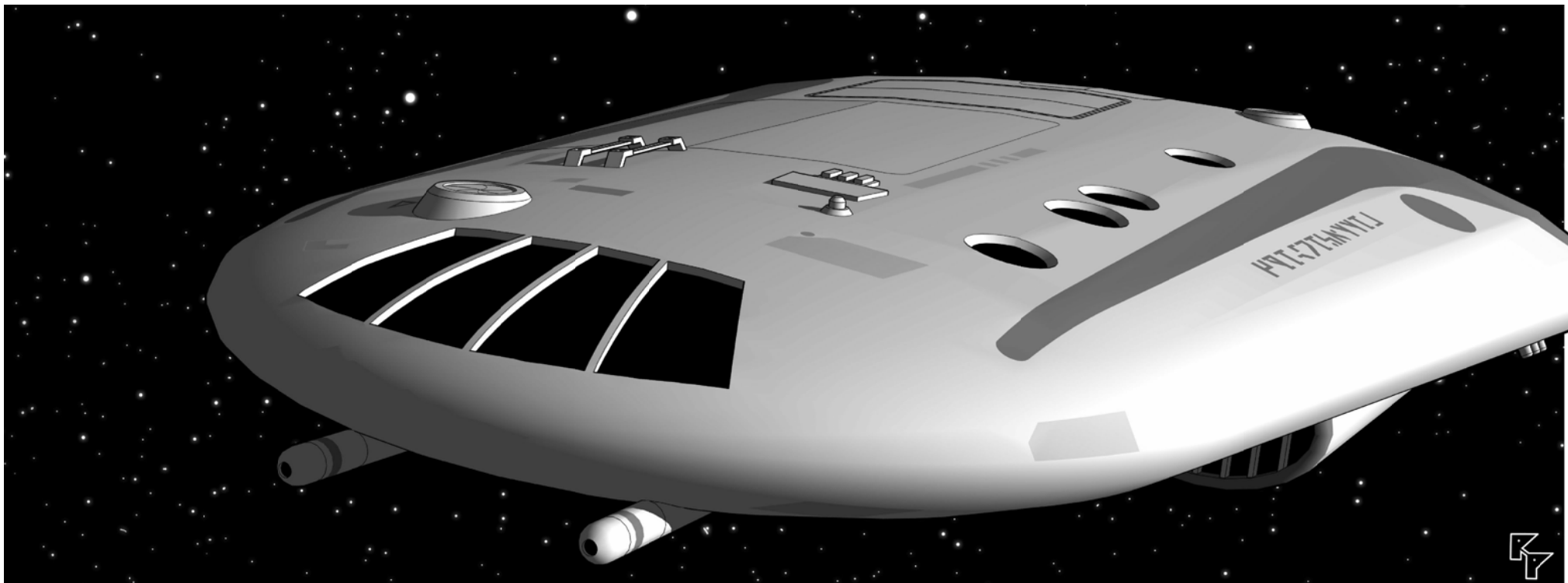
**Deck Plan Symbols**

- Bulkhead
  - Interior Wall
  - Sliding Door
  - Maintenance Hatch
  - Iris Valve
  - Iris Valve - floor
  - Iris Valve - ceiling
  - Iris Valve - both
  - Skylight
  - Low Berth



**Ships of the Class**

Smashing Moon	Hammerfall	Stormbringer
Mjolnir	Bonecrusher	Dragonfist
Sledgehammer	Obsidian Mallet	Concussive Maintenance
Crushing Blow	Heavy Mace	Warhammer



# Hammer-Hunter Class Bounty Hunter Variant

**Statistics**

Tonnage: 100 tons  
Jump: 2 parsecs  
Acceleration: 2G  
Power Plant: 2  
Fuel: 40 tons  
Cargo: 0  
Ship's Vehicles:  

- air/raft "paddy wagon"

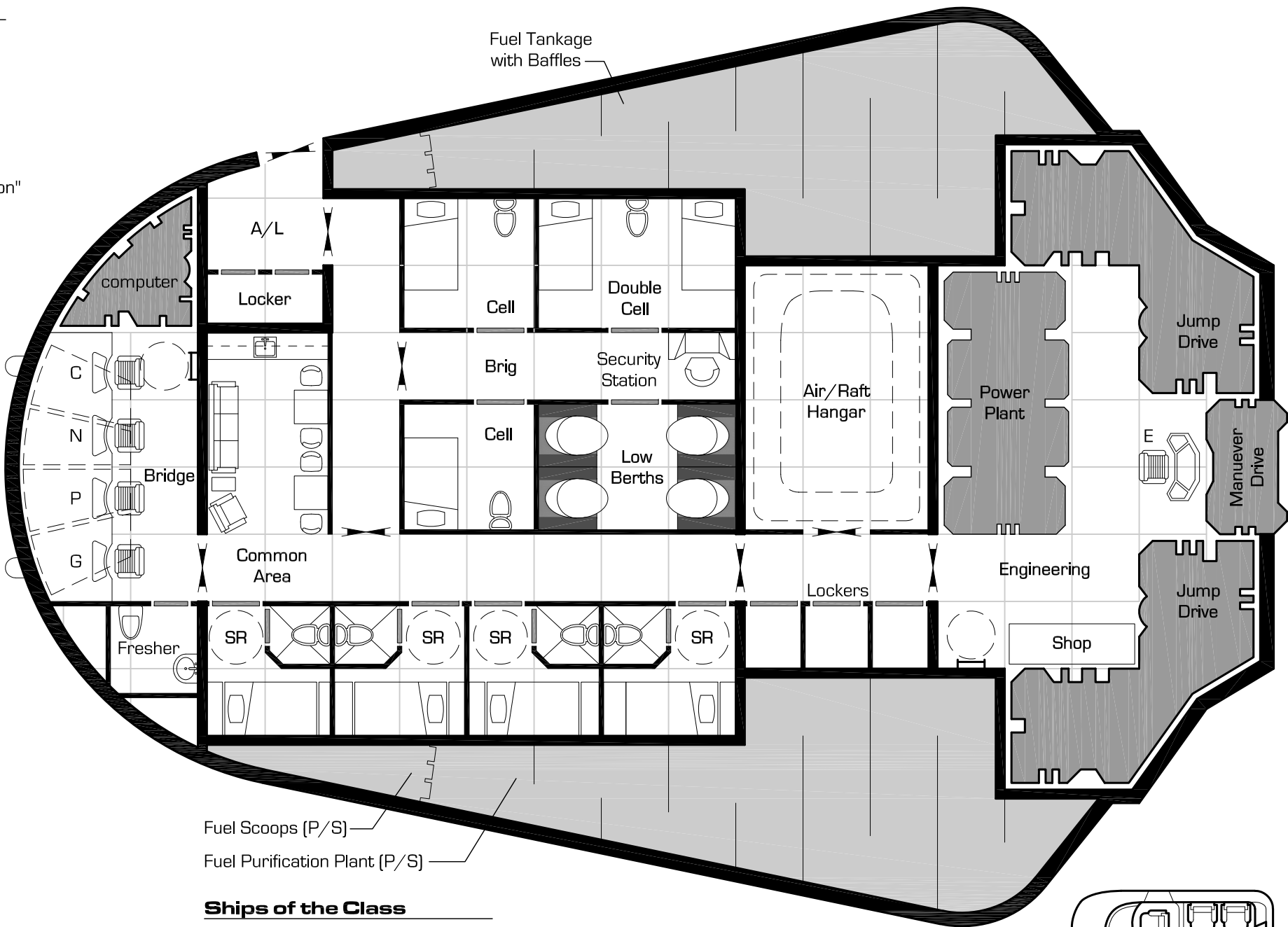
Armaments:  

- 1 triple laser turret

Crew: 4 (min. 1)  

- 1 pilot / navigator
- 1 engineer
- 1 law enforcer
- 1 gunner/ medic

Passengers: 0  
Cells for 4 occupants  
4 low berths



**Ships of the Class**

Backbreaker	Swinging Gavel
Hammer Slammer	Just Us
Billy's Club	Blackjack
Justices' Hammer	Deadly Blow

# Ore-Hunter Class Prospector Variant

**Statistics**

Tonnage: 100 tons  
Jump: 2 parsecs  
Acceleration: 2G  
Power Plant: 2  
Fuel: 40 tons  
Cargo: 0  
Ship's Vehicles:  

- Prospector's Buggy

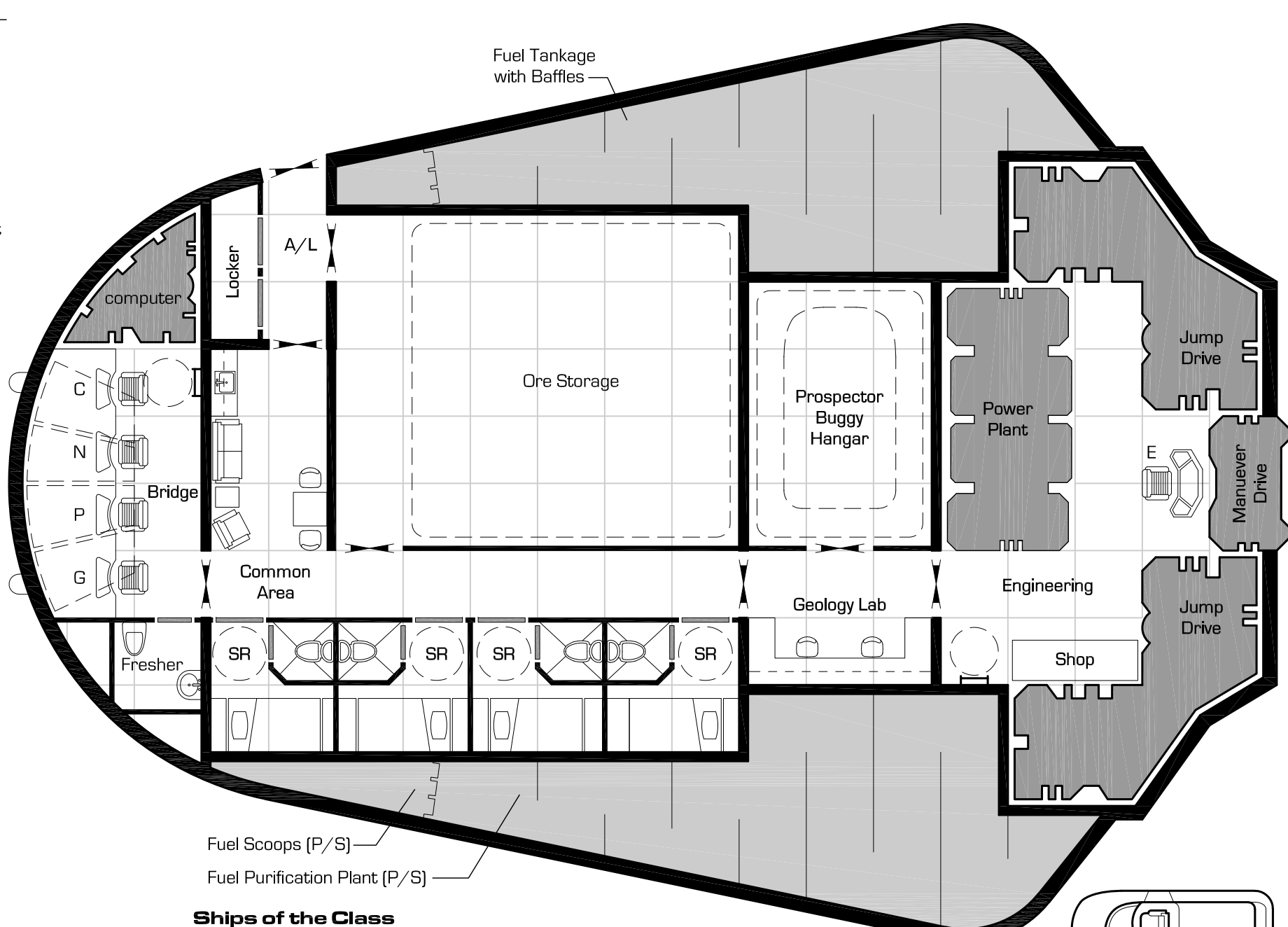
Armaments:  

- 1 double laser turret

Crew: 4 (min. 1)  

- 1 pilot / navigator
- 1 engineer
- 1 belter/ gunner
- 1 belter/ medic

Passengers: 0  
No low berths



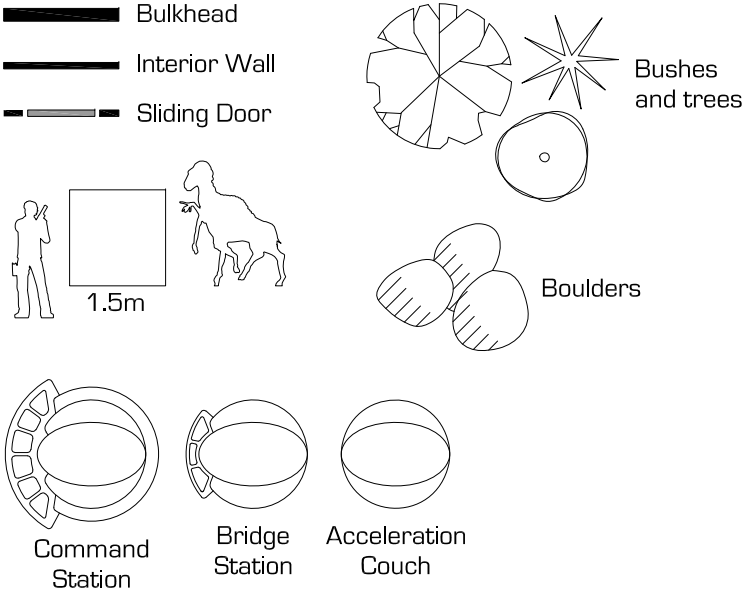
**Ships of the Class**

Rockhammer	Fool's Gold
Core Beliefs	Hammerfall
Stonecrusher	Rock Steady
Belter's Beauty	Black Maul



# Kr'grr Class 1,000 ton K'Kree Courier

## Deck Plan Symbols



## Statistics

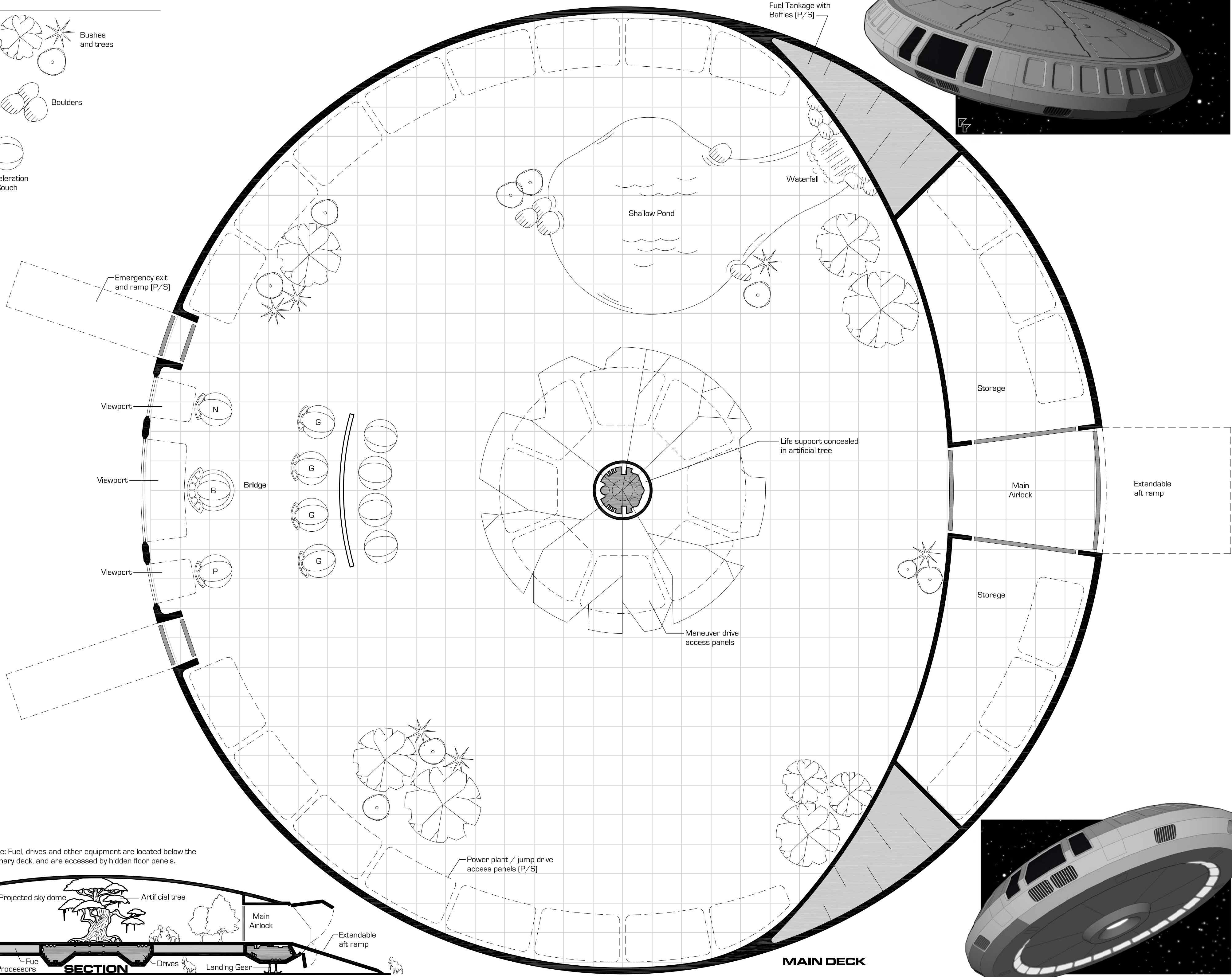
Tonnage: 1,000 tons  
Jump: 2 parsecs  
Acceleration: 2G  
Power Plant: 2  
Fuel: 220 tons  
Cargo: 38 tons  
Ship's Vehicles: none  
Armaments:

- 4 double lasers

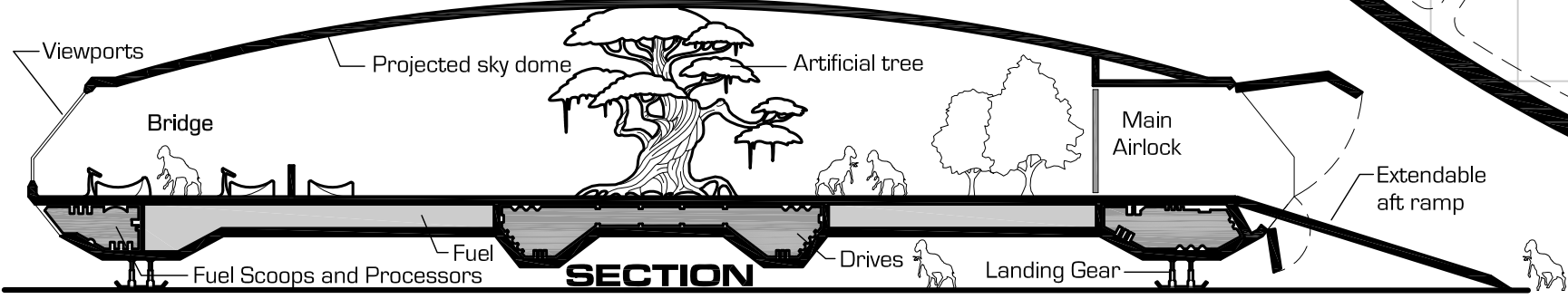
  
Crew: 10

- 1 boss
- 1 pilot
- 1 navigator
- 3 engineers
- 4 gunners

  
Passengers: 8  
No low berths



Note: Fuel, drives and other equipment are located below the primary deck, and are accessed by hidden floor panels.



# Nirvana Class 40 Ton Modular Dropship

### Deck Plan Symbols

- Bulkhead
- Interior Wall
- Sliding Door
- Maintenance Hatch
- Iris Valve
- Iris Valve - floor
- Iris Valve - ceiling
- Iris Valve - both
- Low Berth
- Stairs down
- 1.5m

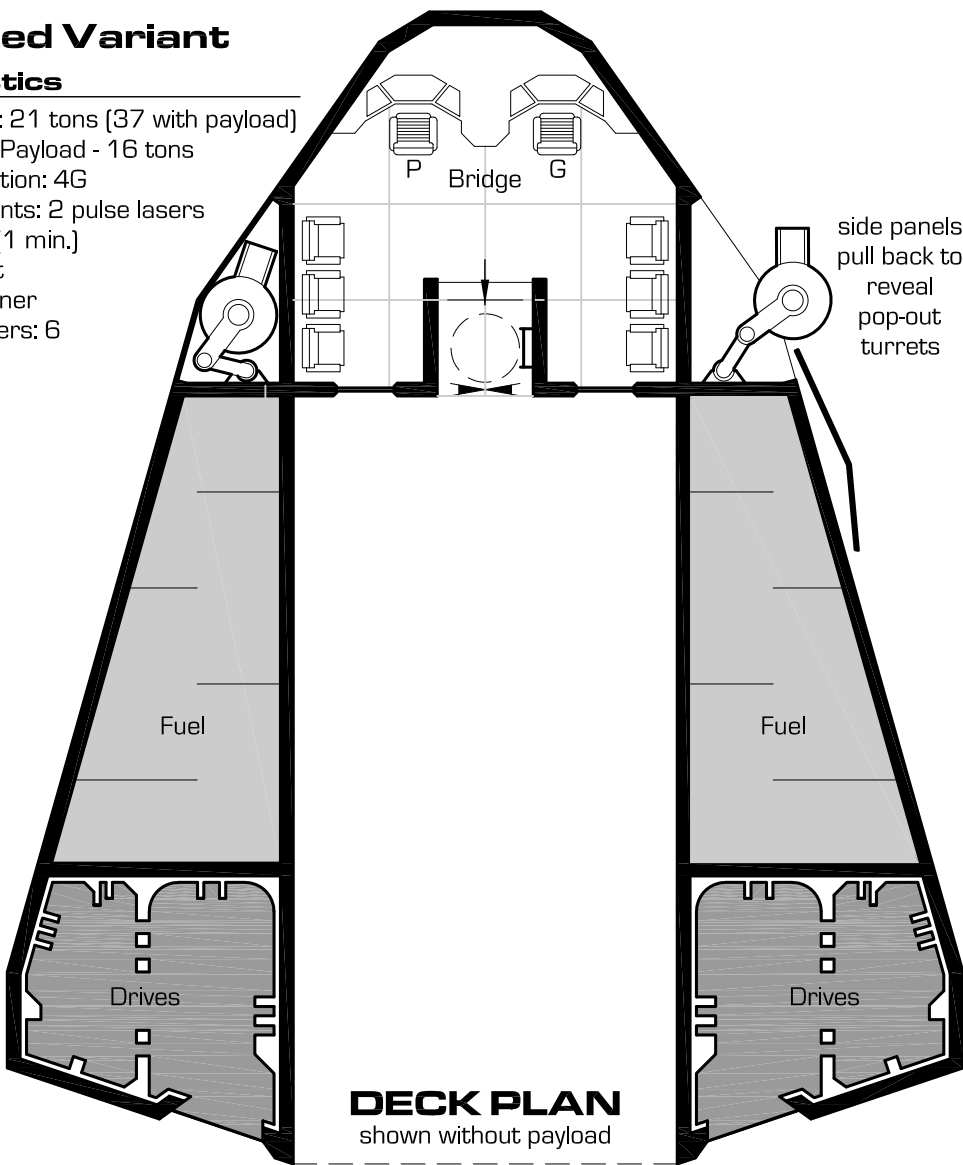
### Armed Variant

#### Statistics

Tonnage: 21 tons (37 with payload)  
Modular Payload - 16 tons  
Acceleration: 4G  
Armaments: 2 pulse lasers  
Crew: 2 (1 min.)

- 1 pilot
- 1 gunner

Passengers: 6



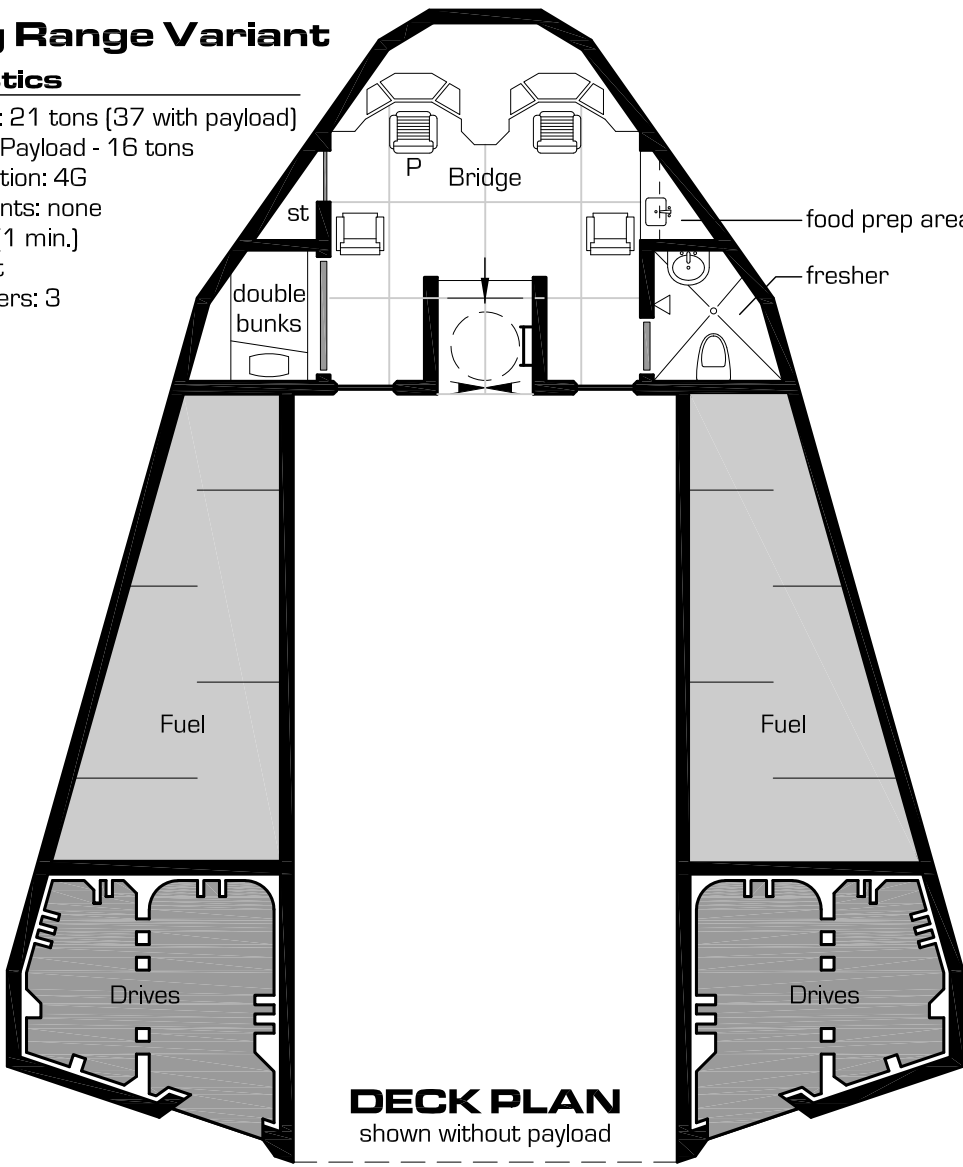
### Long Range Variant

#### Statistics

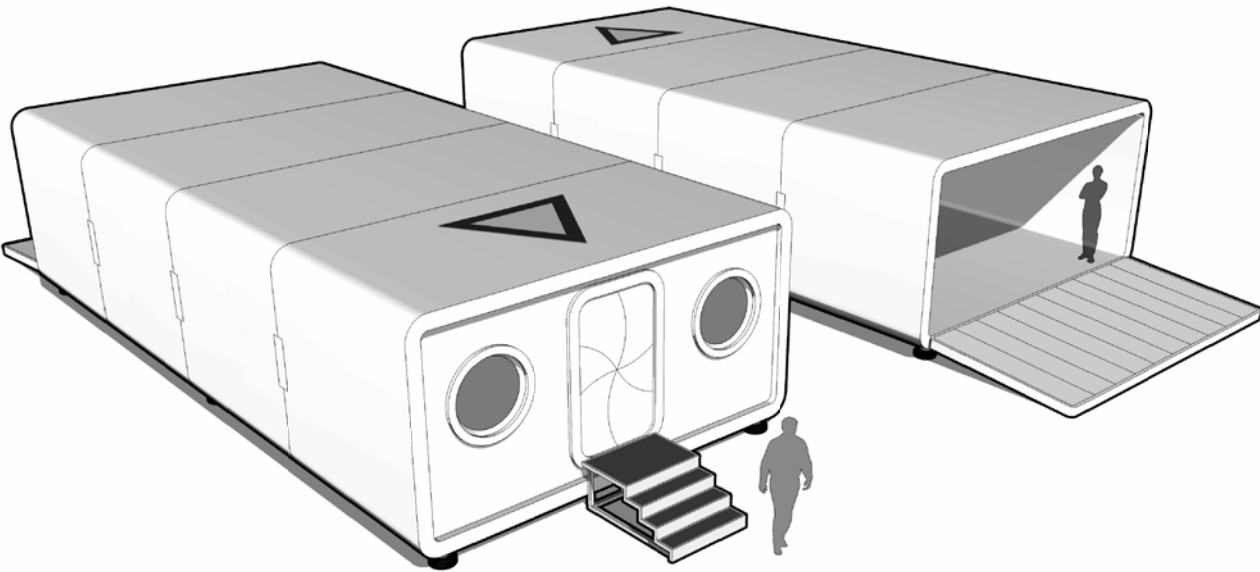
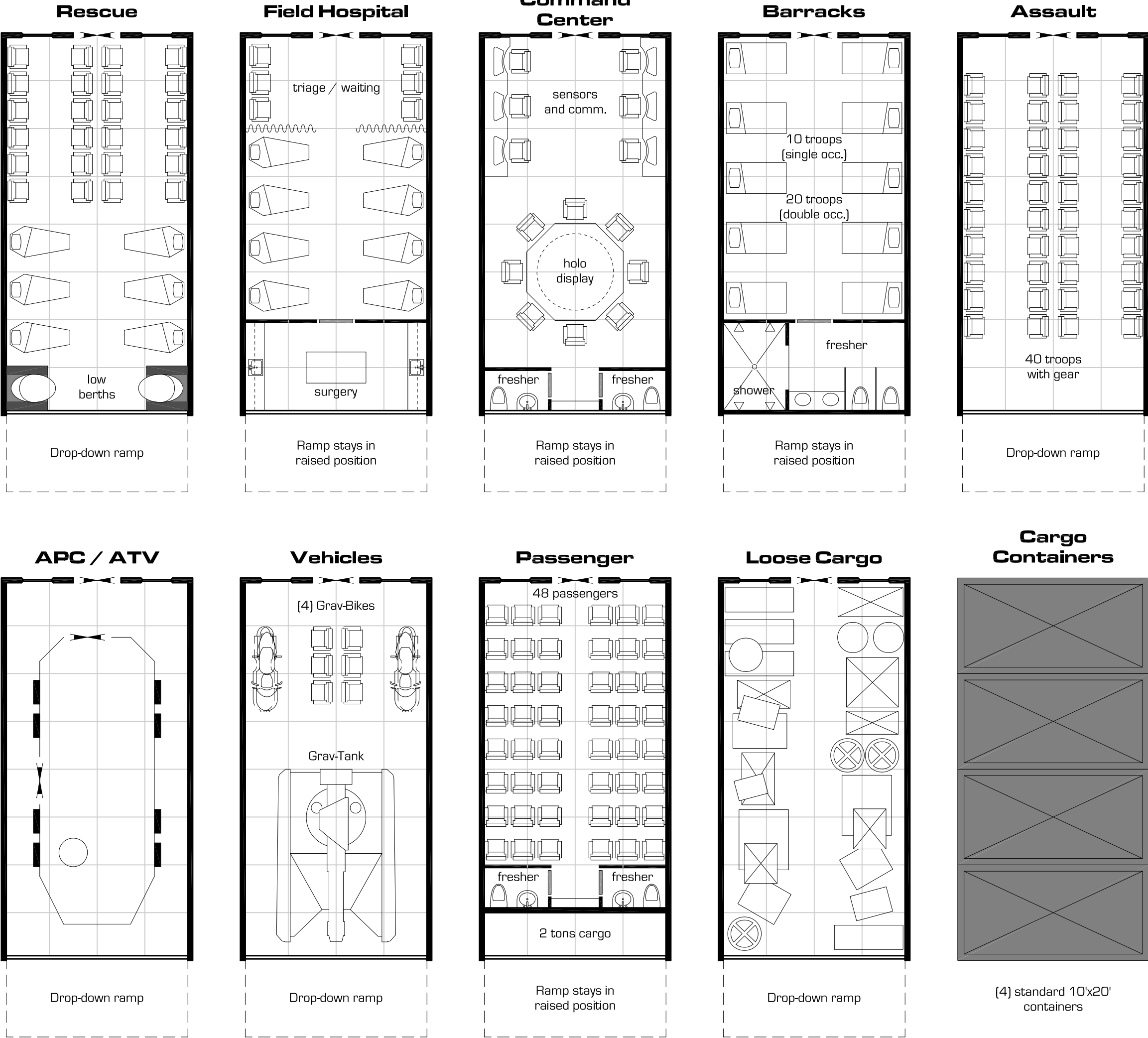
Tonnage: 21 tons (37 with payload)  
Modular Payload - 16 tons  
Acceleration: 4G  
Armaments: none  
Crew: 1 (1 min.)

- 1 pilot

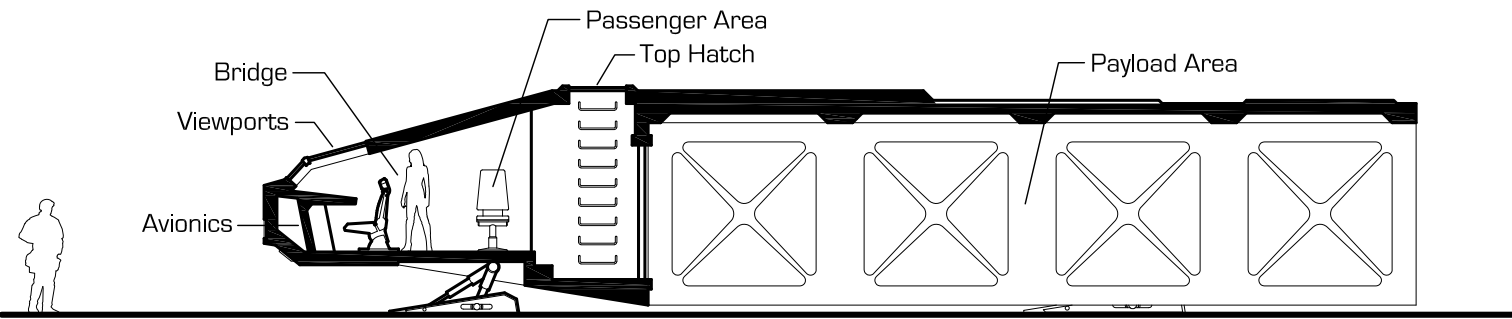
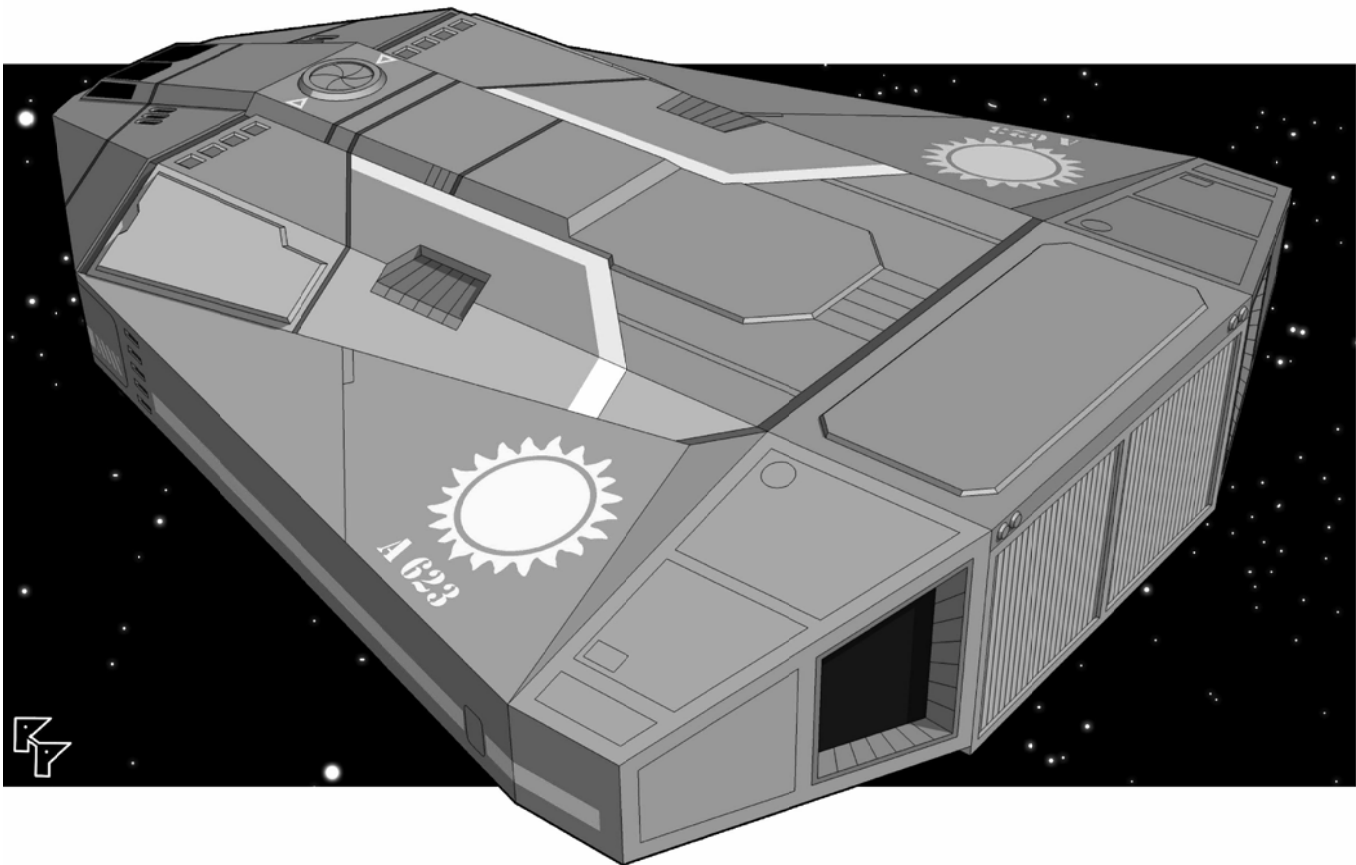
Passengers: 3



## Payload Configurations



Standard Payload Shell



SECTION



# Prosperity Class 200 ton Yacht

### Statistics

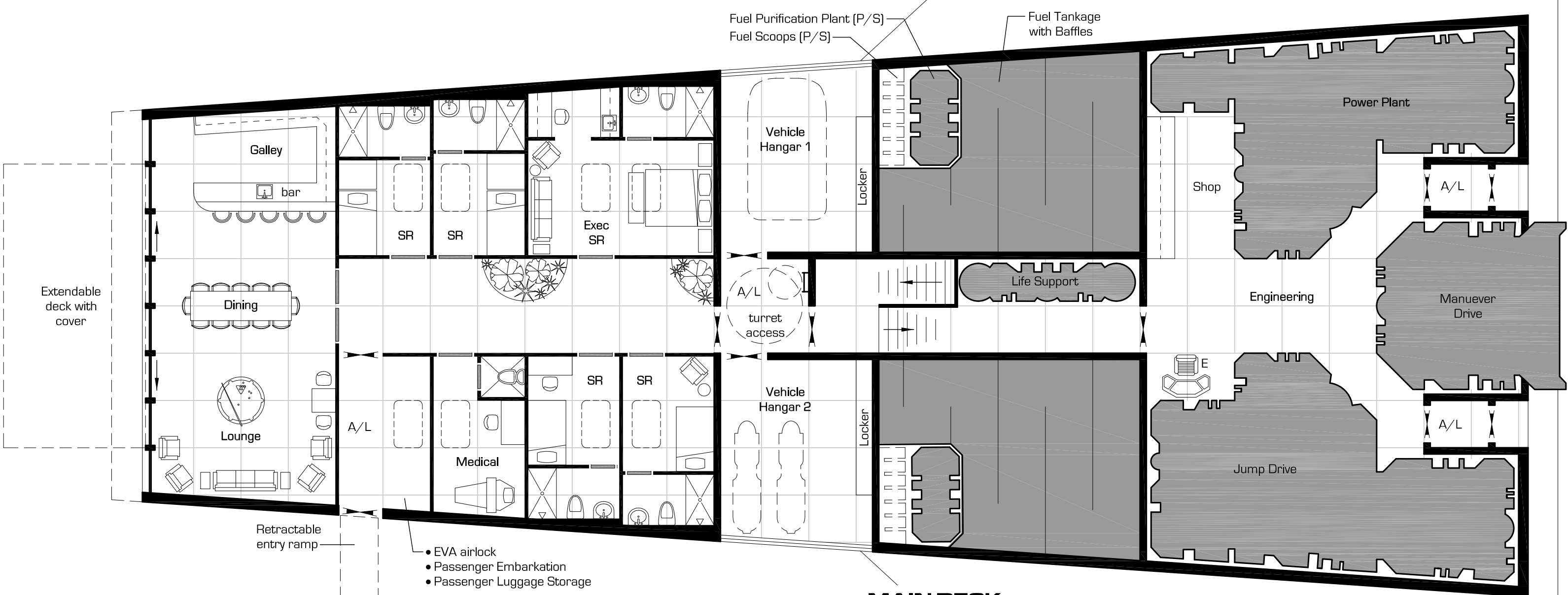
- Tonnage: 200 tons  
Jump: 2 parsecs  
Acceleration: 4G  
Power Plant: 4  
Fuel: 88 tons  
Cargo: 2 tons  
Ship's Vehicles:
  - 1 air/raft
  - 2 grav-bikesArmaments:
  - 1 double laser turret
  - 1 missile rackCrew: 5 (2 min.)
  - 1 pilot / navigator
  - 1 engineer
  - 1 steward/medic
  - 2 gunnersPassengers: 6  
No low berths

### Deck Plan Symbols

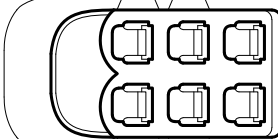
- Bulkhead
- Interior Wall
- Sliding Door
- Maintenance Hatch
- Iris Valve
- Iris Valve - floor
- Iris Valve - ceiling
- Iris Valve - both
- Stairs down
- 1.5m
- skylight
- decorative landscaping

### Ships of the Class

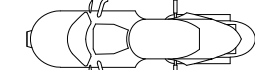
- Windseeker  
Temperance  
Silver Wing  
Freewinds  
Illustrious  
Fascination  
Vision  
Golden Shadow  
Passion  
Monarch  
Luxury  
Abundance



- EVA airlock
- Passenger Embarkation
- Passenger Luggage Storage

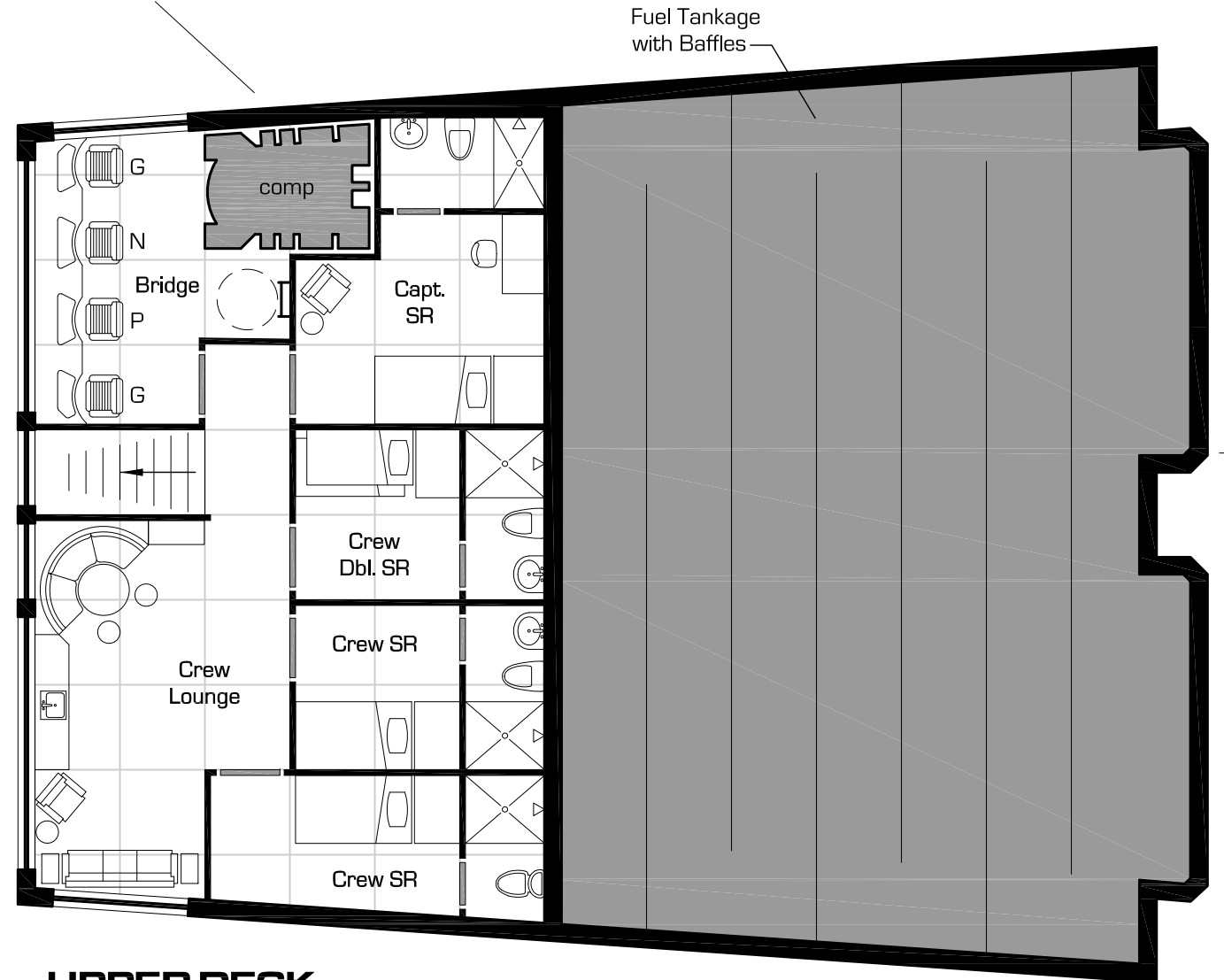


Standard Air/Raft

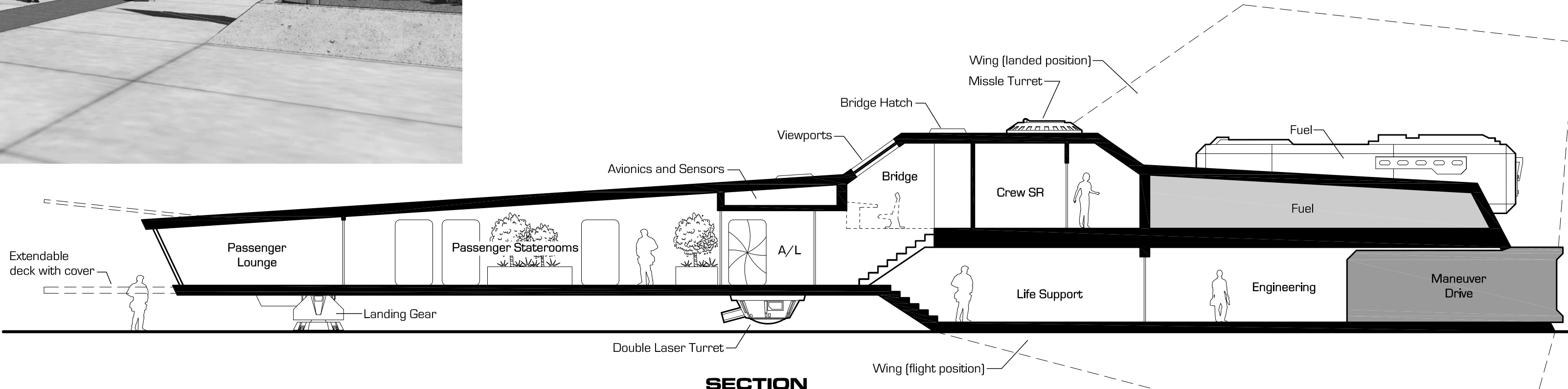
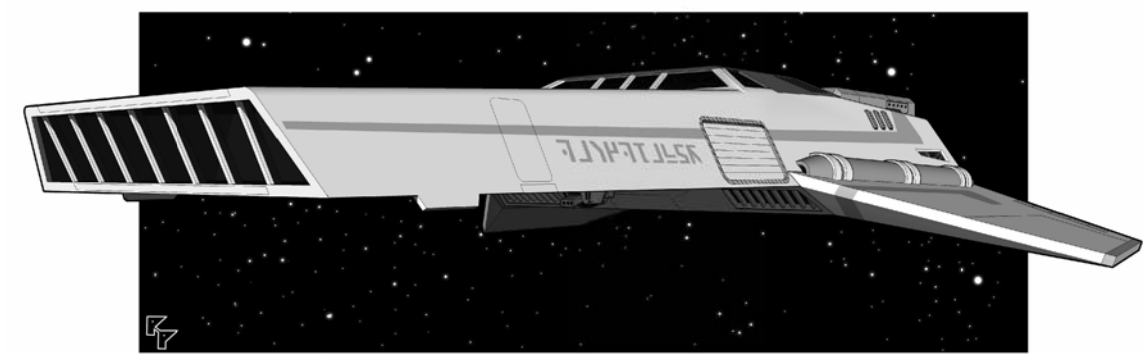
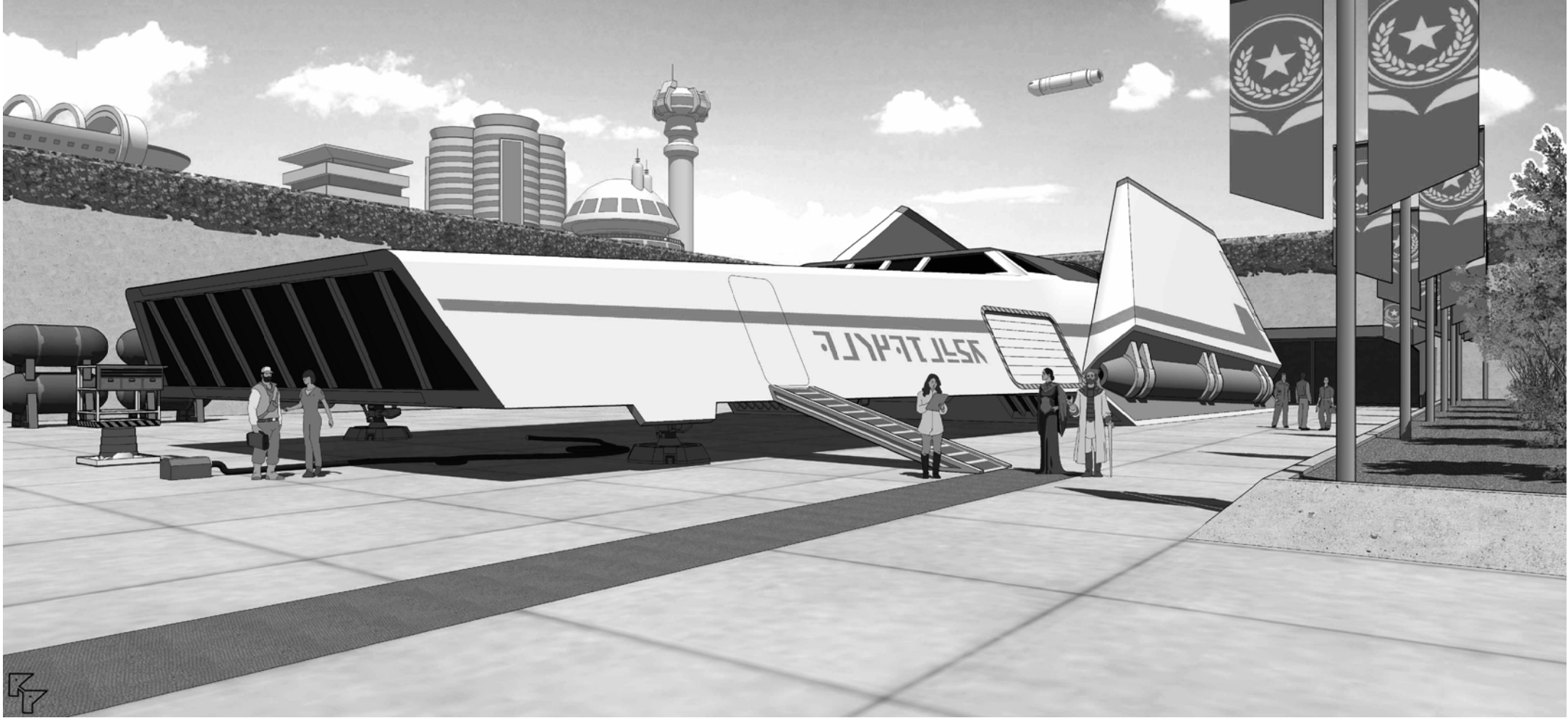
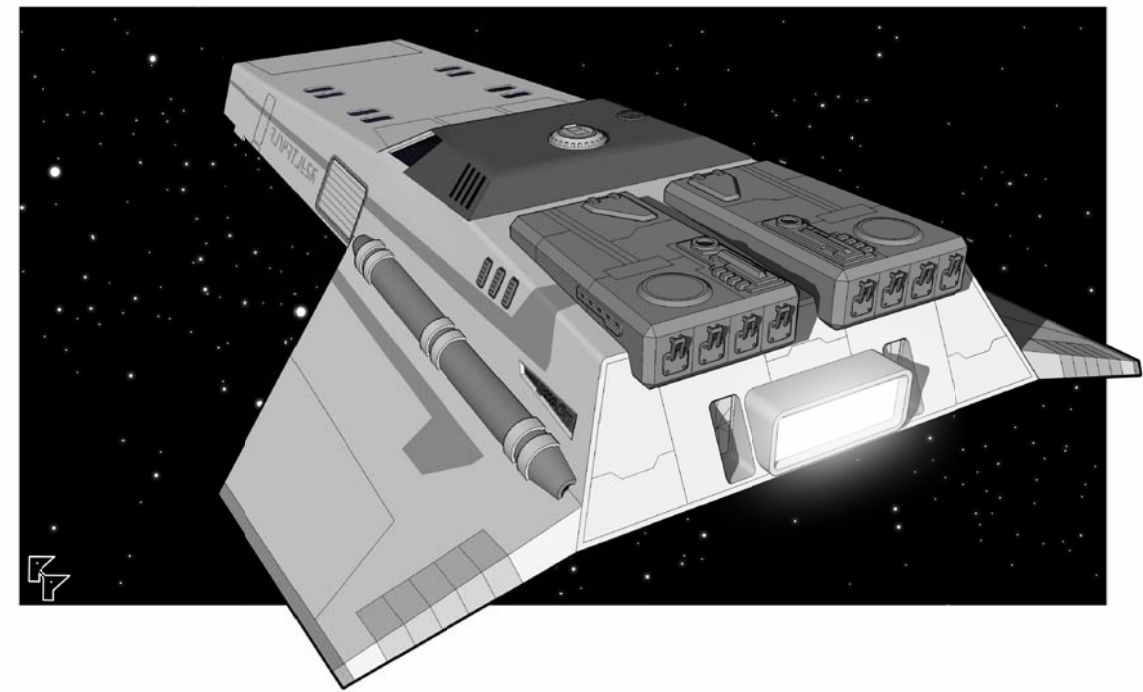


Grav-Bike

### MAIN DECK



### UPPER DECK



### SECTION



# Sharptooth Class 200 ton Armed Merchant

## Statistics

Tonnage: 200 tons  
Jump: 2 parsecs  
Acceleration: 2G  
Power Plant: 2  
Fuel: 40 tons  
Cargo: 50 tons  
Ship's Vehicles:

- 1 air/raft

Armaments:

- ventral triple laser
- 1 aft dorsal missile turret

Crew: 6 (2 min.)

- 1 pilot / captain
- 1 engineer
- 1 navigator
- 2 gunners
- 1 medic

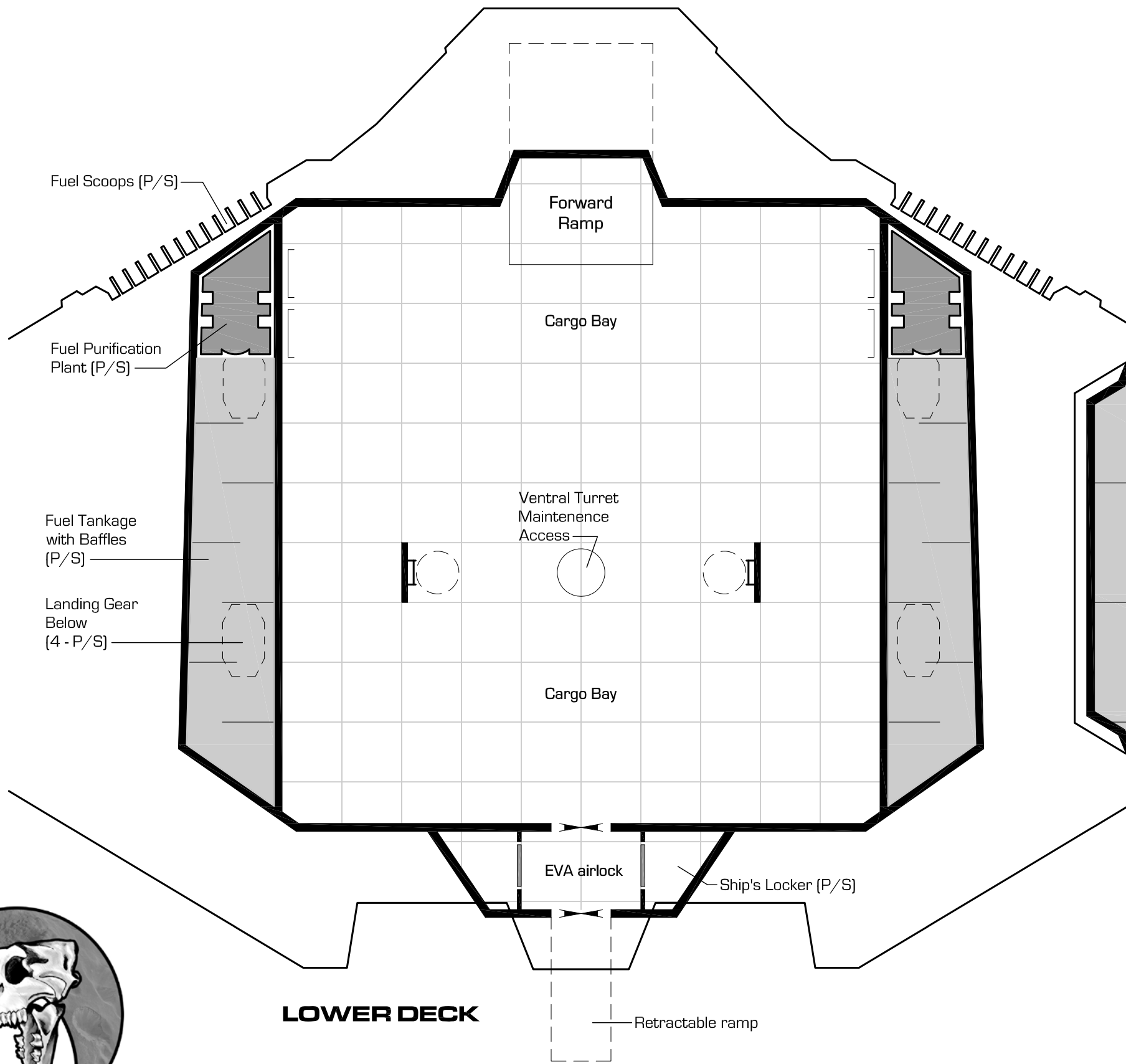
Passengers: 0  
No low berths

## Deck Plan Symbols

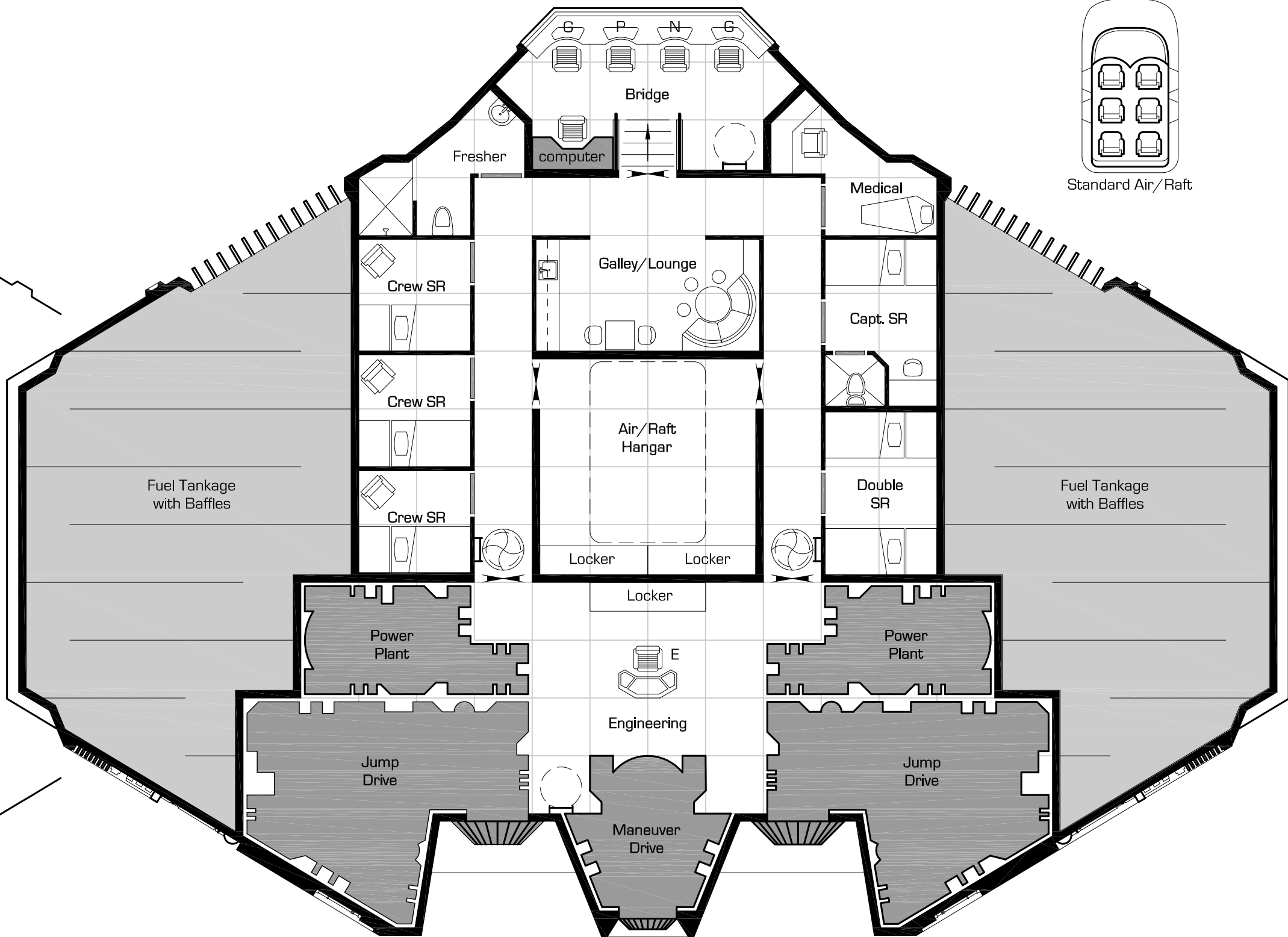
- Bulkhead
- Interior Wall
- Sliding Door
- Maintenance Hatch
- Iris Valve
- Iris Valve - floor
- Iris Valve - ceiling
- Iris Valve - both
- Stairs down
- 1.5m

## Ships of the Class

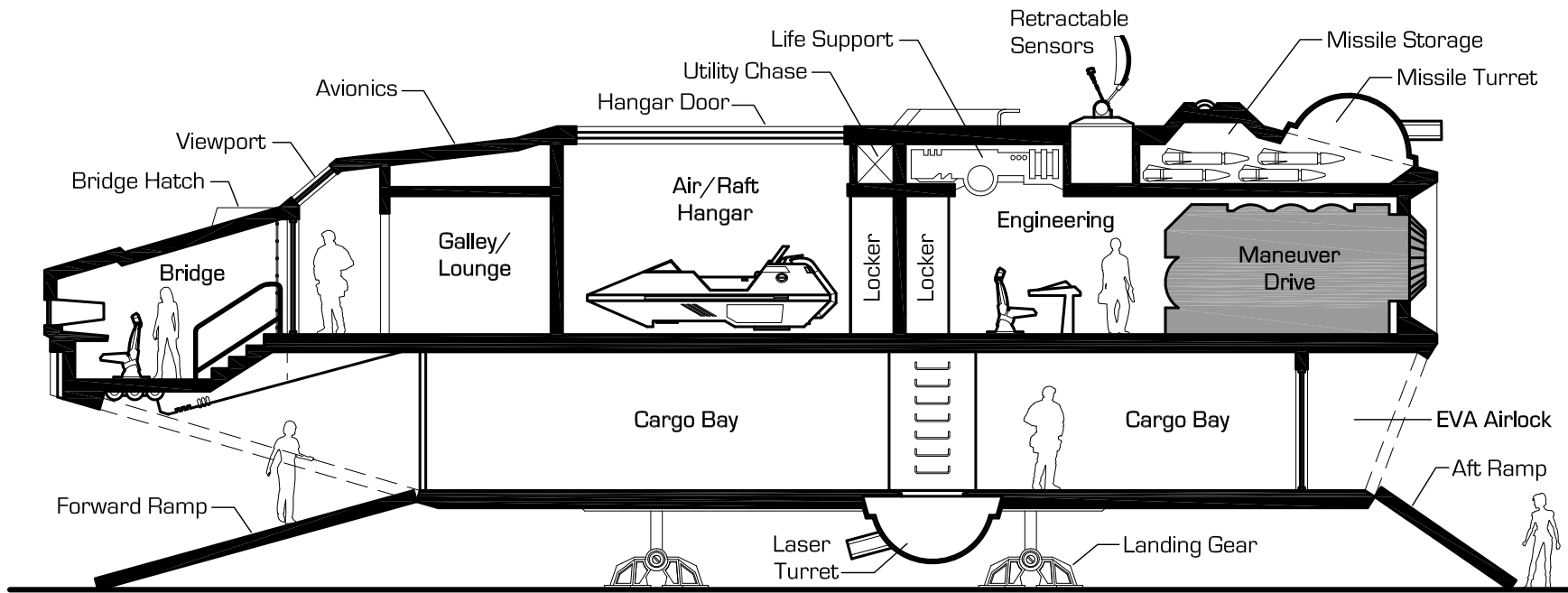
Sharptooth  
Glistening Fang  
Wolf's Tooth  
Red Incisor  
Jagged Tusk  
Righteous Biter  
Vampyre  
Murnau's Advantage  
Bloody Thorn  
Cutting Shard  
Nosferatu  
DawnWalker  
Urz Nakhae  
Wicked Grin



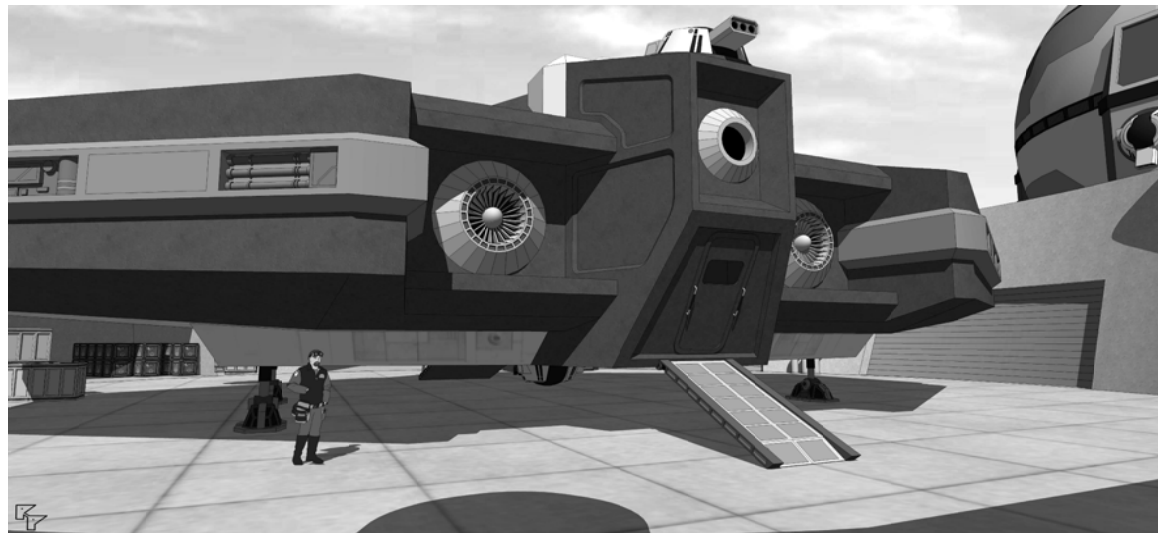
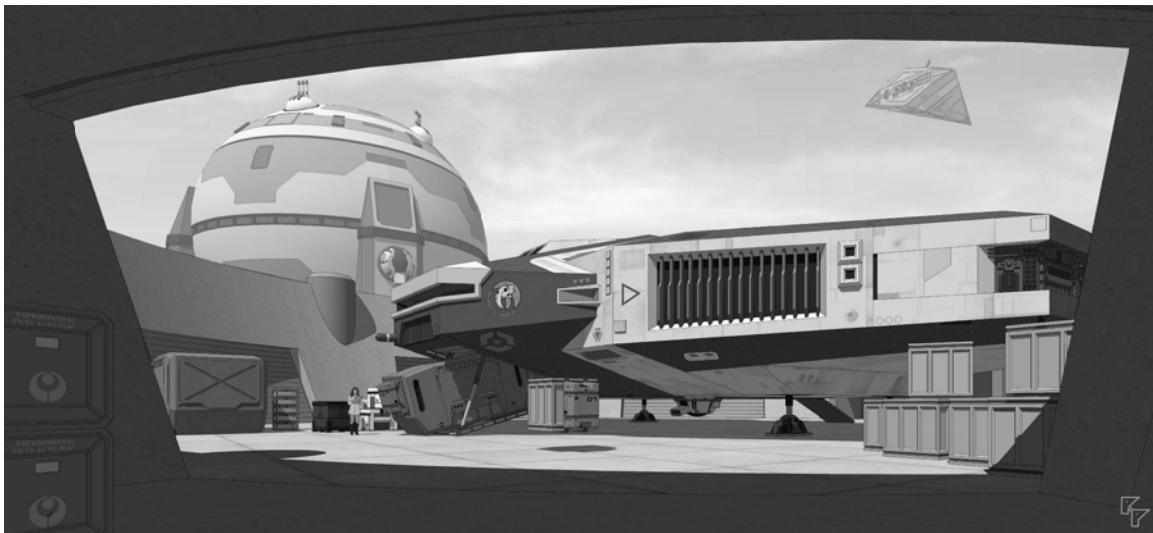
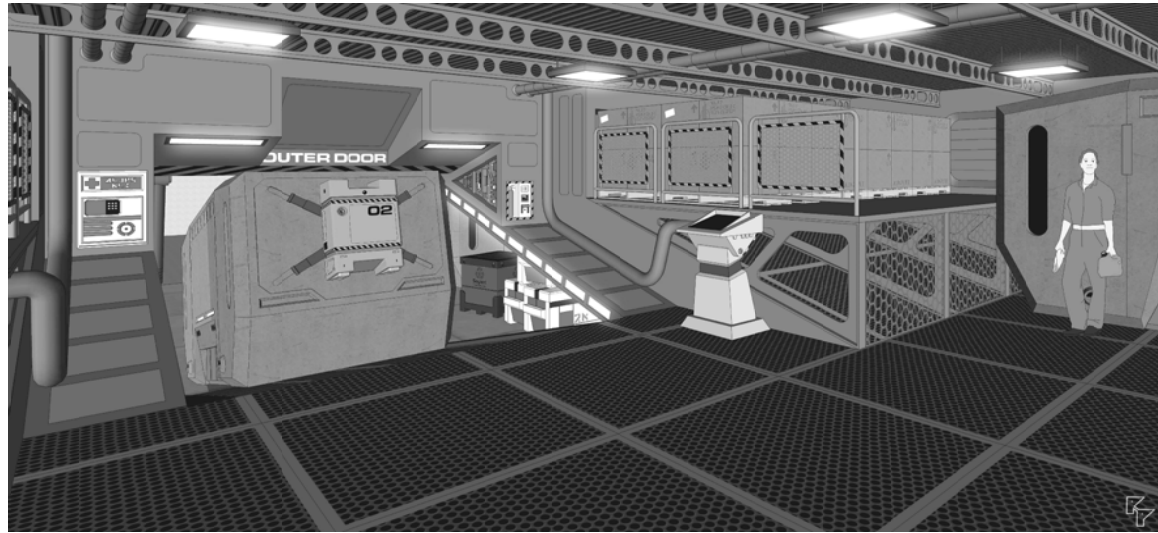
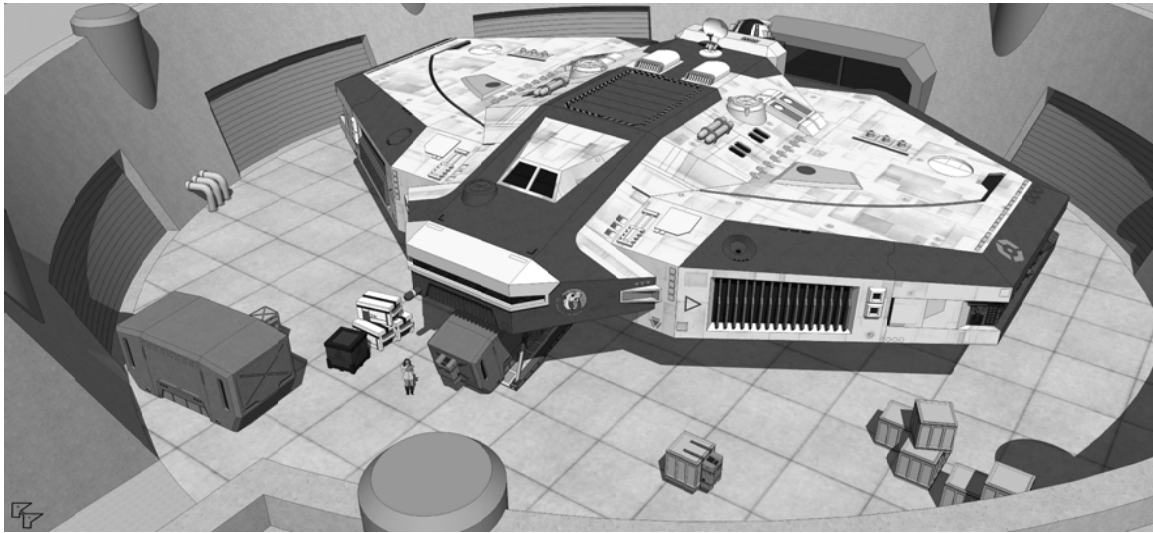
LOWER DECK



MAIN DECK



SECTION



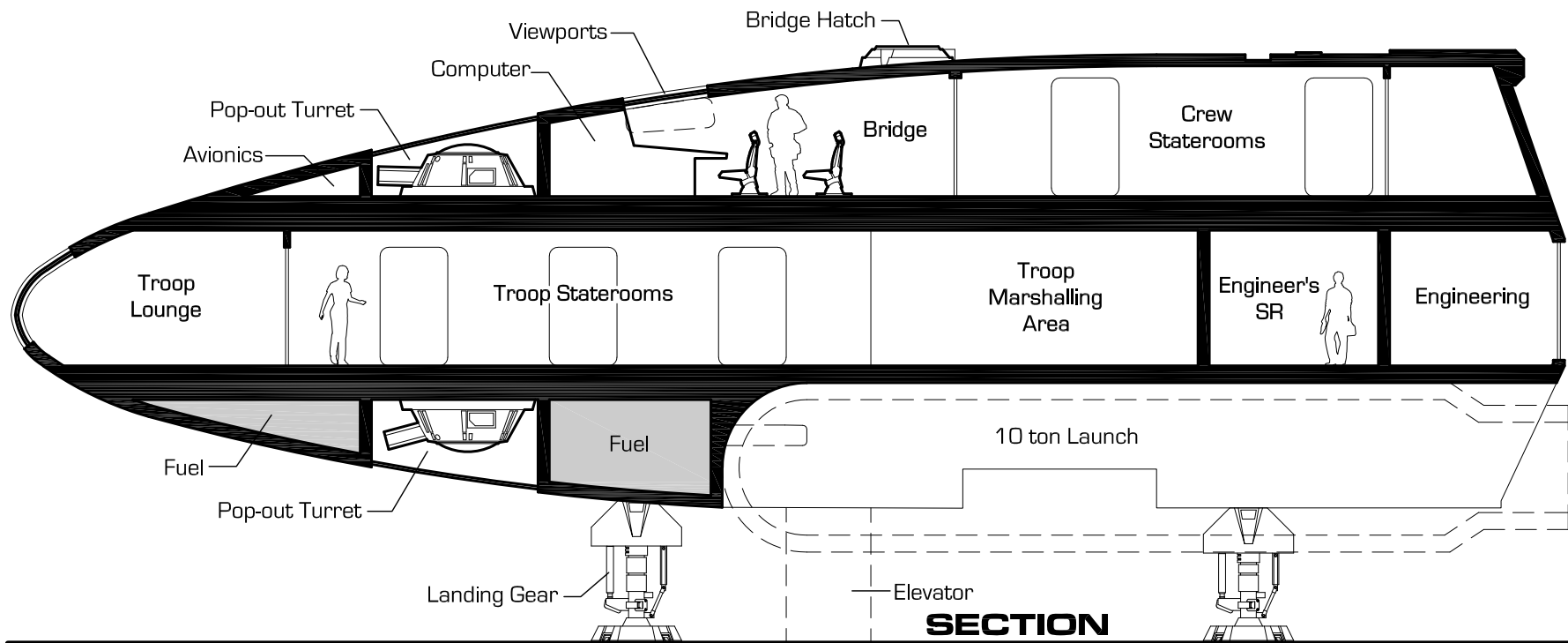
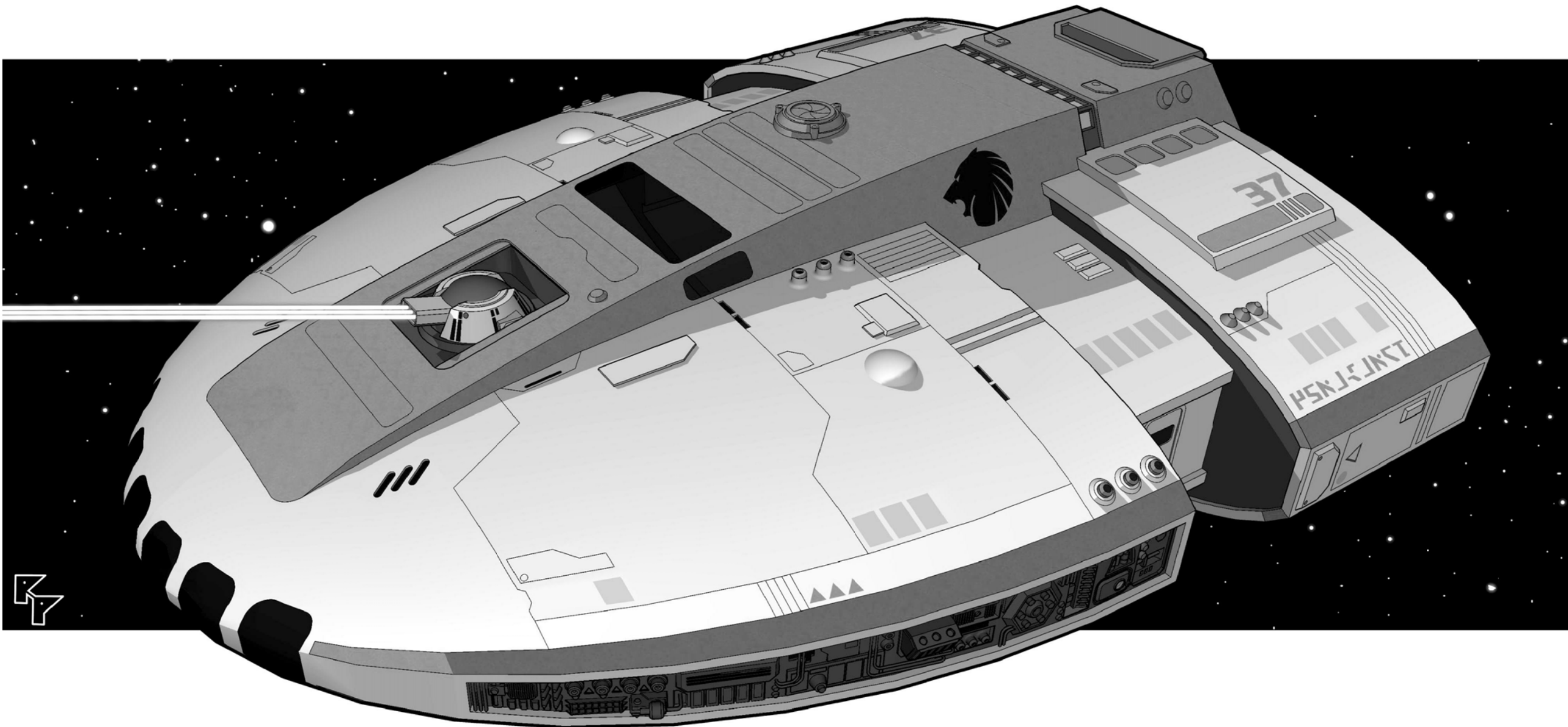
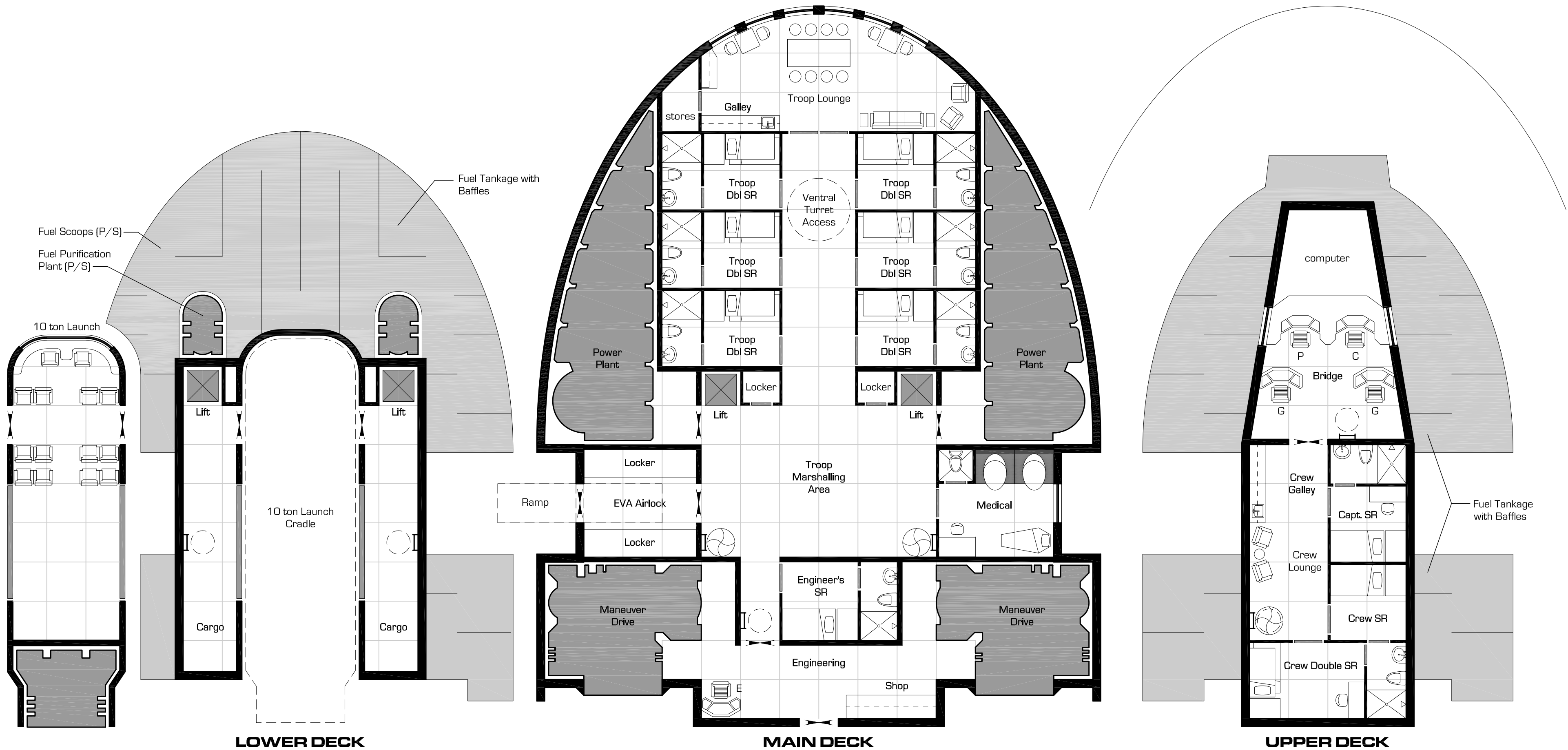
# Stardrake Class 200 ton System Defense Boat

## Statistics

- Tonnage: 200 tons  
Jump: 0  
Acceleration: 6G  
Power Plant: 6  
Fuel: 60 tons  
Cargo: 9 tons  
Ship's Vehicles:
  - 10 ton launchArmaments:
  - 2 triple laser turretsCrew: 5 (2 min.)
  - 1 pilot / navigator
  - 1 engineer
  - 1 steward/medic
  - 2 gunnersPassengers: 12 troops  
2 low berths

## Deck Plan Symbols

- Bulkhead
- Interior Wall
- Sliding Door
- Maintenance Hatch
- Iris Valve
- Iris Valve - floor
- Iris Valve - ceiling
- Iris Valve - both
- Low Berth
- Stairs down
- 1.5m





# X-Boat Station

### Statistics

Tonnage: 200 tons  
Jump: 0 parsecs  
Acceleration: 1G  
Power Plant: 1  
Fuel: 170 tons  
Cargo: 4 tons  
Ship's Vehicles:

- 50 ton fuel cutter

Armaments:

- none, 2 handpoints provided

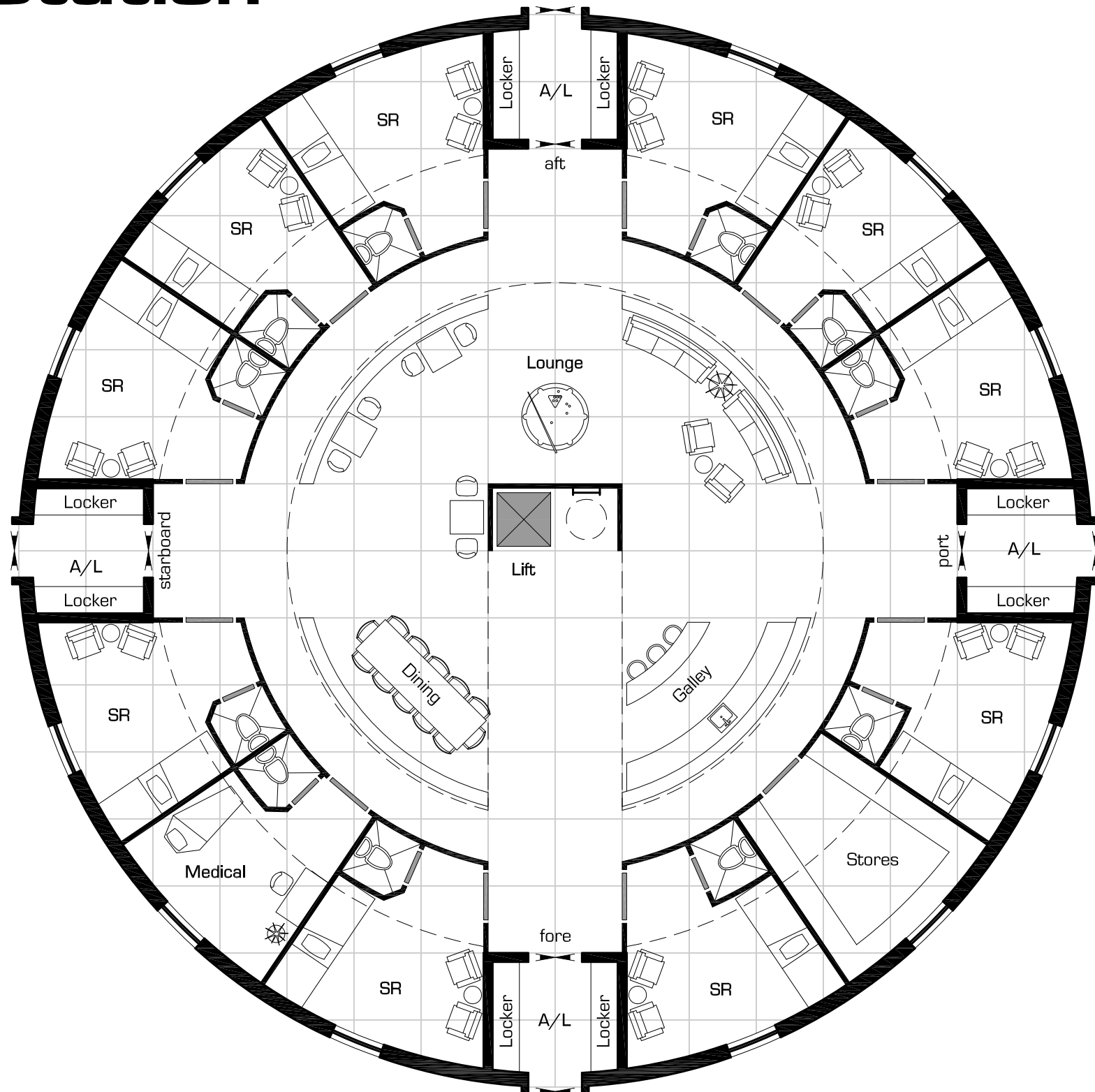
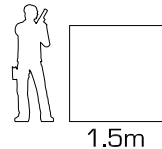
Crew: 8

- 1 pilot / navigator
- 1 engineer
- 1 steward / medic
- 2 data technicians
- 1 x-boat engineer
- 2 gunners (when armed)

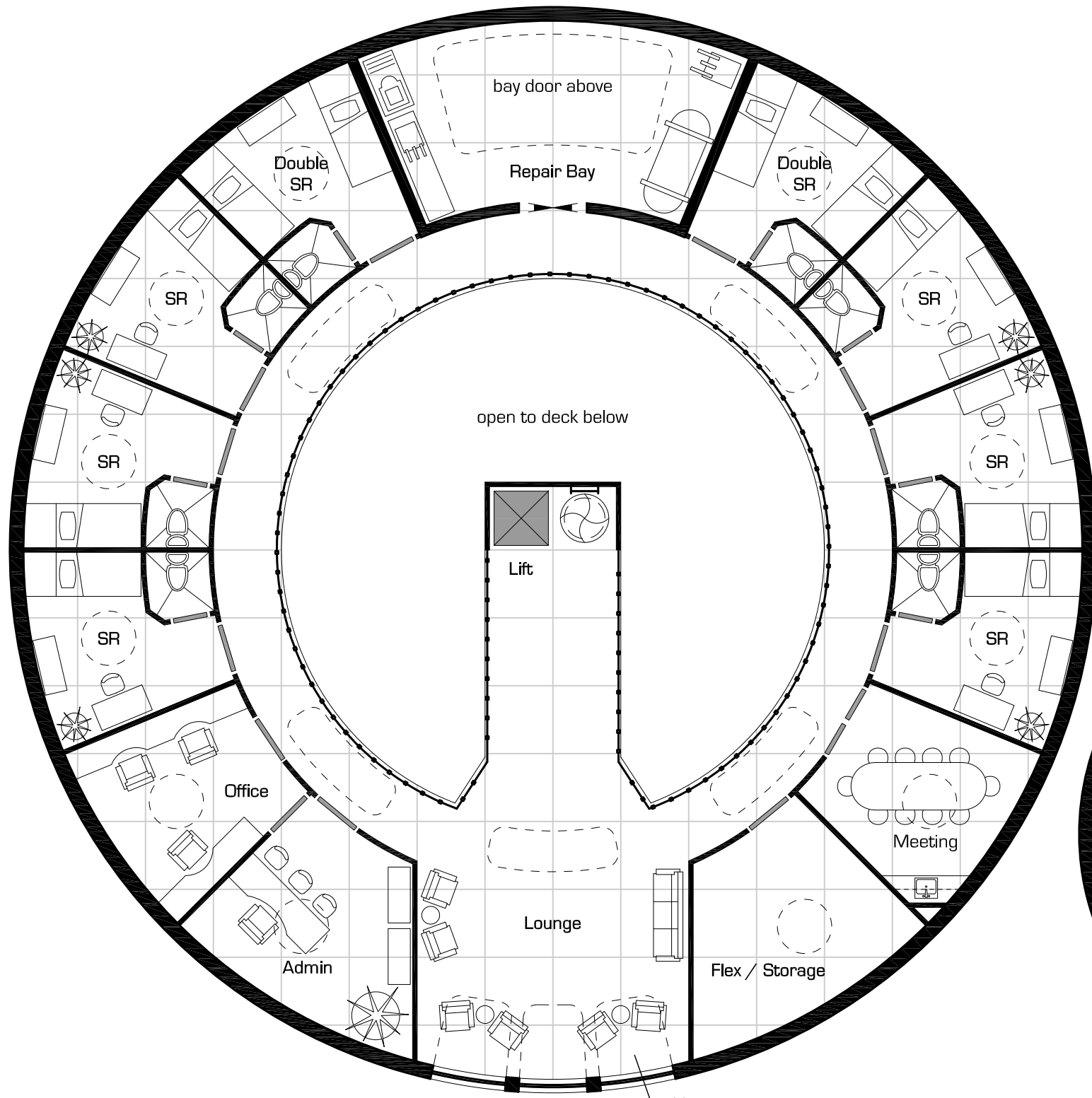
Passengers: 12 (max.)  
No low berths

### Deck Plan Symbols

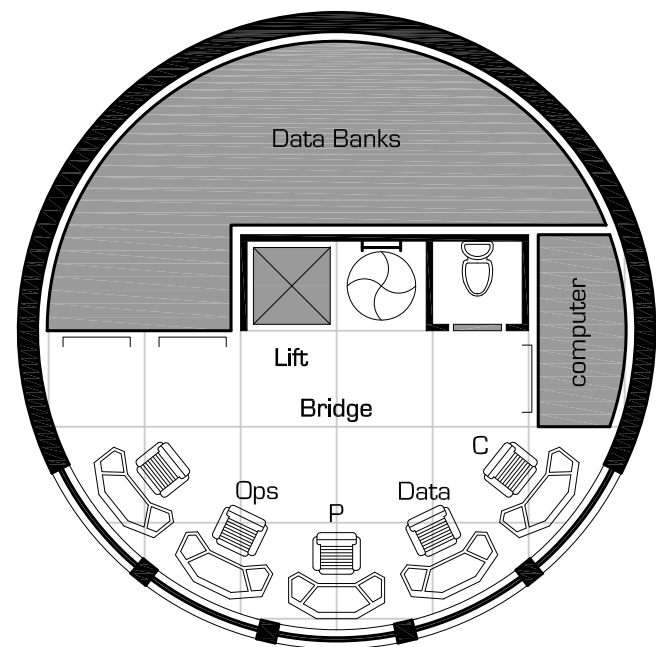
- Bulkhead
- Interior Wall
- Sliding Door
- Maintenance Hatch
- Iris Valve
- Iris Valve - floor
- Iris Valve - ceiling
- Iris Valve - both
- Skylight



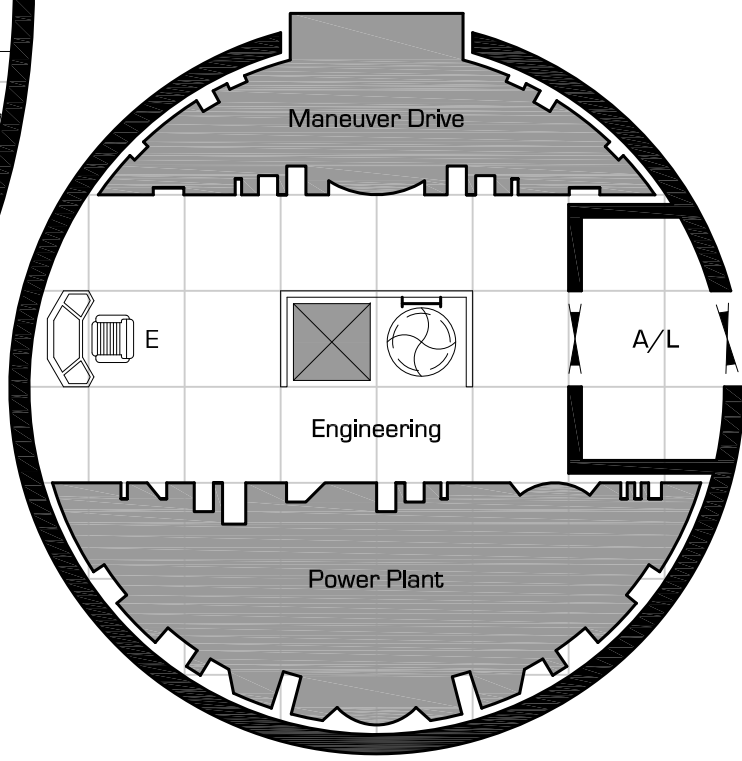
**DECK 1**  
X-Boat Crew Deck



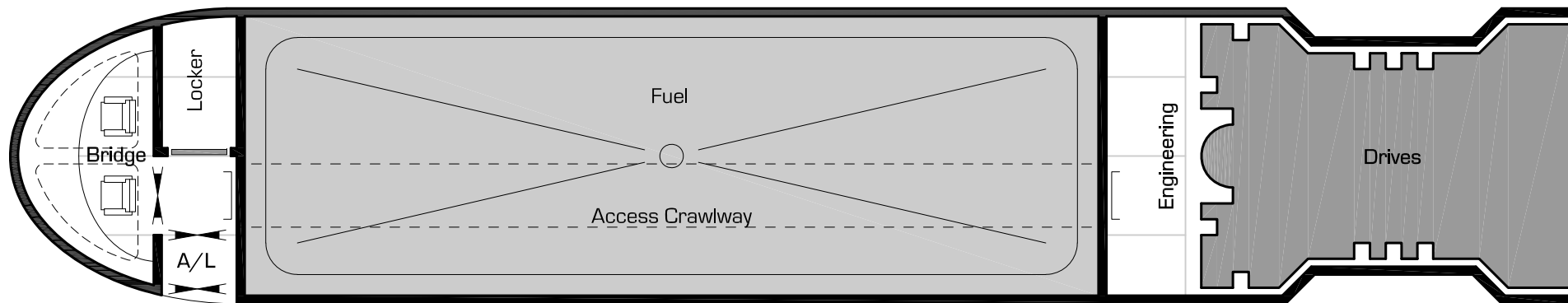
**DECK 2**  
Station Crew & Admin Deck



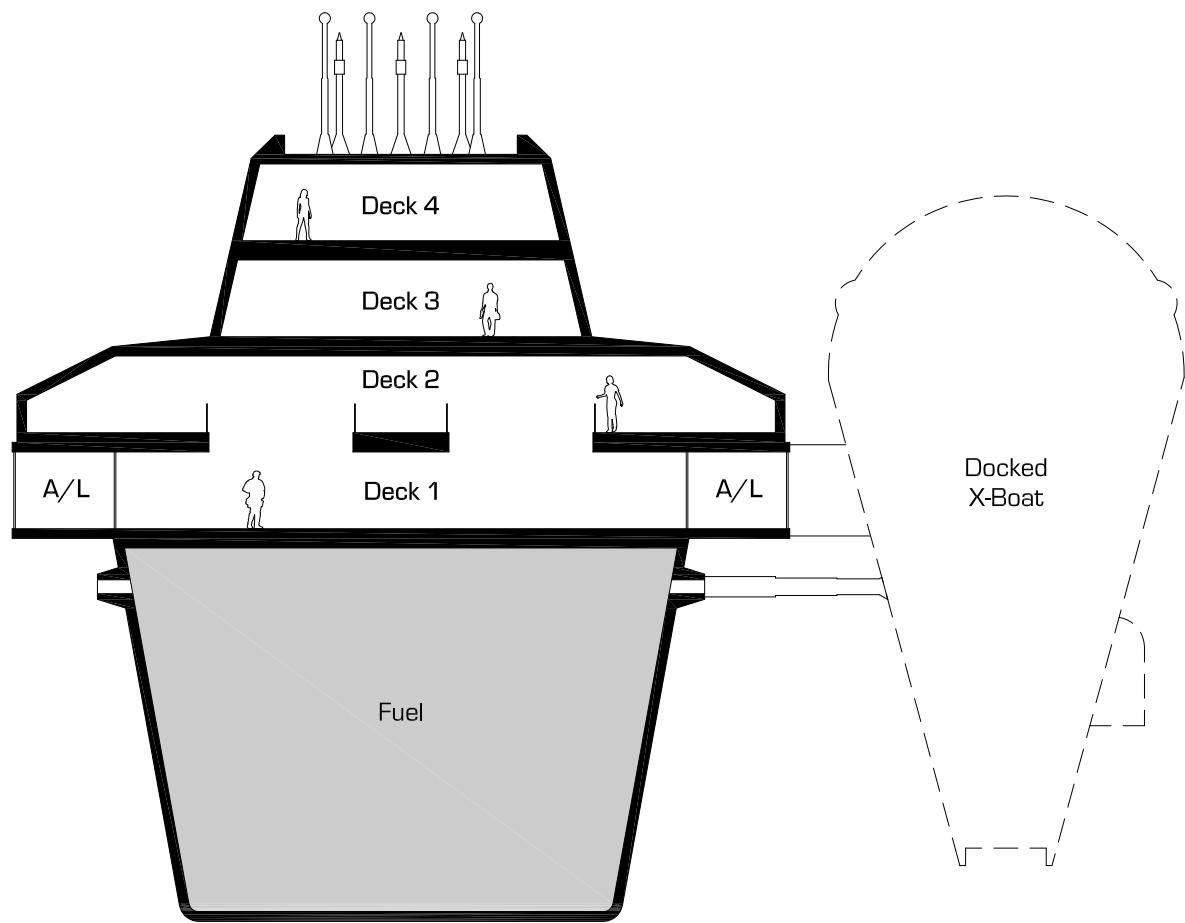
**DECK 4**  
Bridge & Data Banks



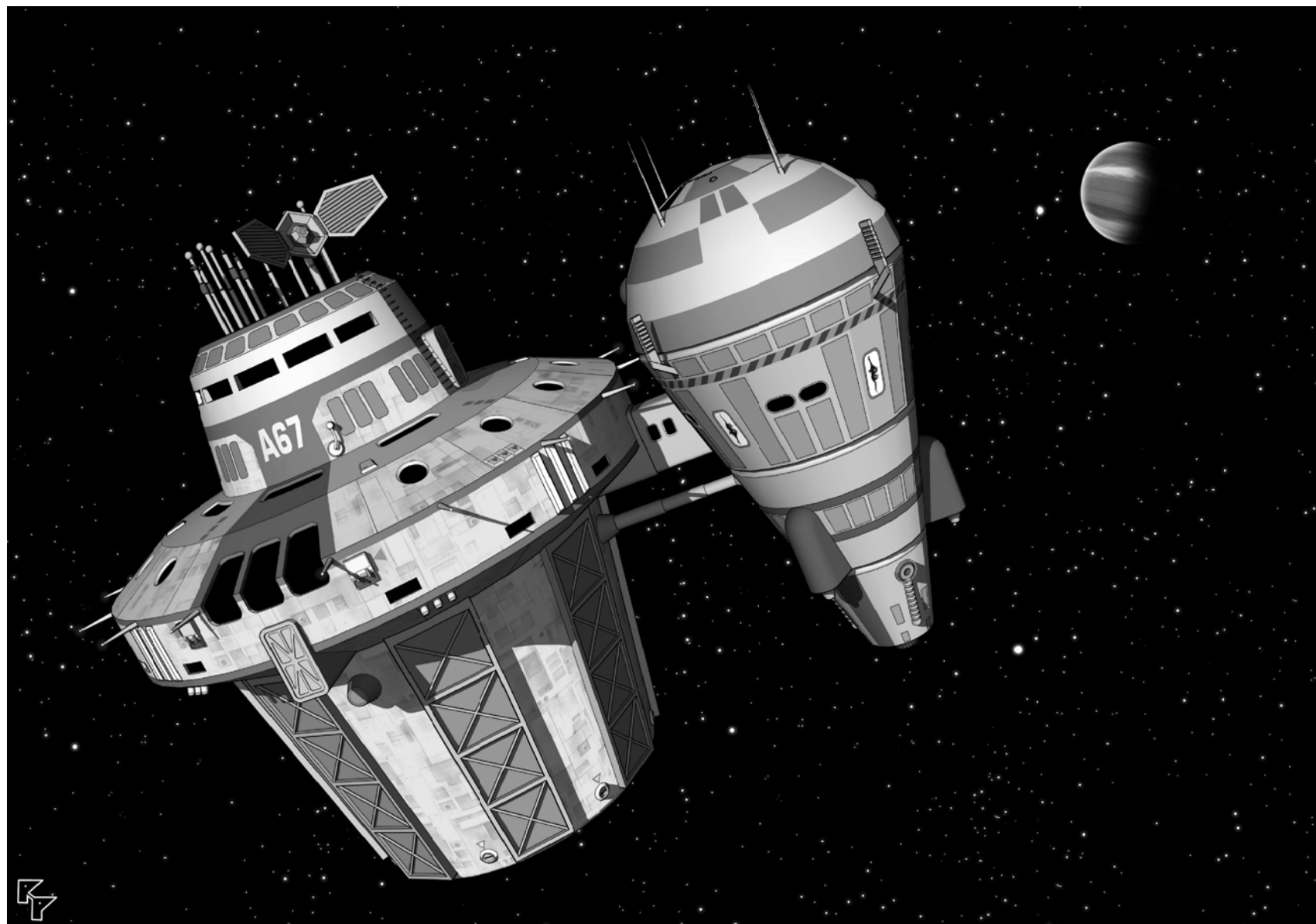
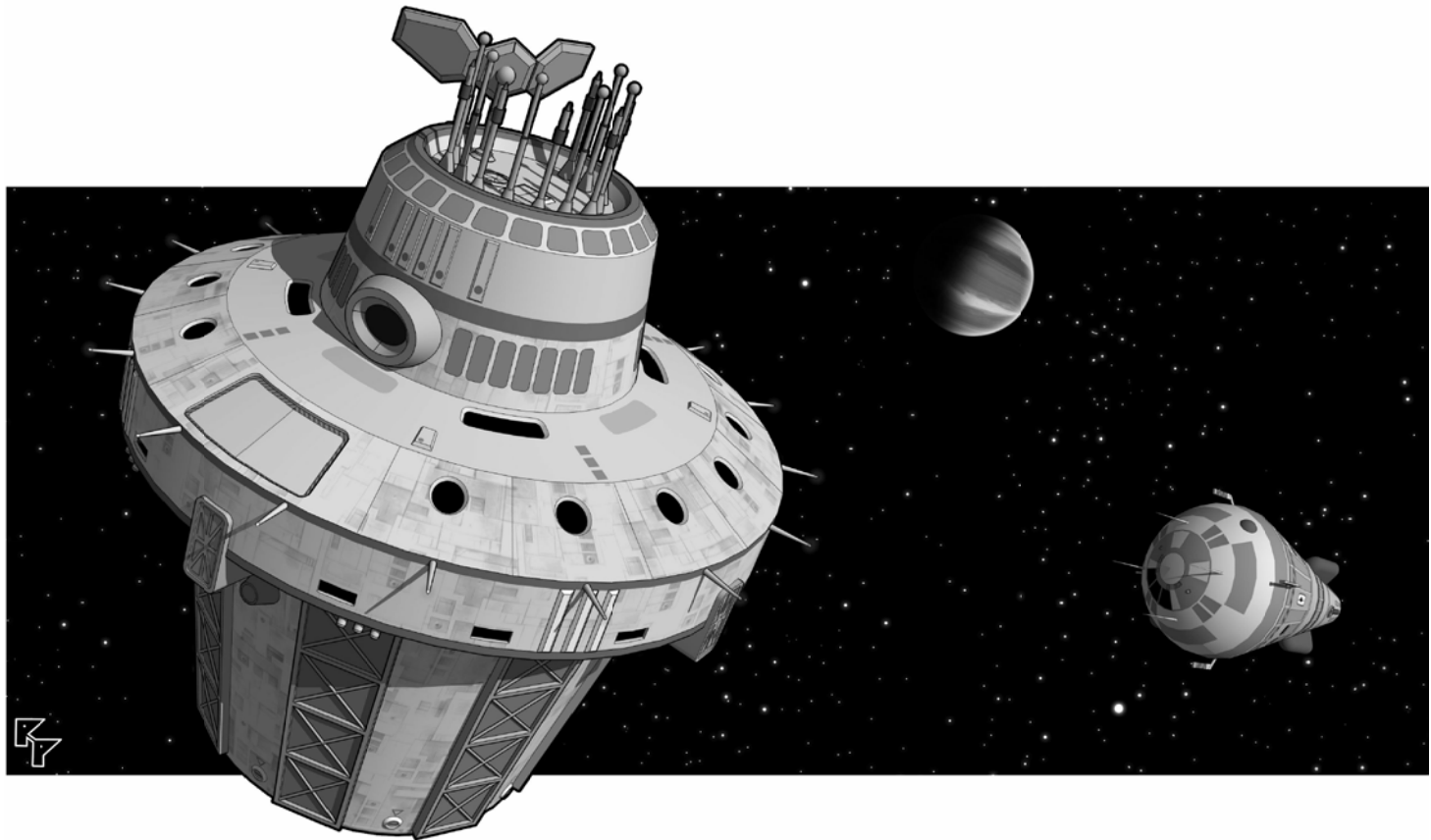
**DECK 3**  
Engineering



**50 ton Fuel Cutter**



**SECTION**





# Yetsabl Class 200 ton Zhodani Courier

Based on the deck plans from GURPs  
"Aliens Races 1 - Zhodani and Vargr"

### Statistics

- Tonnage: 200 tons  
Jump: 3 parsecs  
Acceleration: 2G  
Power Plant: 3  
Fuel: 90 tons  
Cargo: 11 tons  
Ship's Vehicles:
  - 1 grav speederArmaments:
  - 1 triple turret w/ double laser and sandcaster

- Crew: 5 (2 min.)
  - 1 pilot / navigator
  - 1 engineer
  - 1 steward
  - 1 gunner
  - 1 medic

- Passengers: 4  
No low berths

### Deck Plan Symbols

- Bulkhead  
— Interior Wall  
— Sliding Door  
— Maintenance Hatch

⊗ Iris Valve

⊗ Iris Valve - floor

⊗ Iris Valve - ceiling

⊗ Iris Valve - both

